



MARCH  
2018



UTILITIES



Park closed for tower work from  
March 5, 2018 - June 30, 2018

# THE LAWRENCE LIFT NEWSLETTER

ISSUE

25



## BICYCLE MASTERPLAN UPDATE

The City's consultant, United Consulting Engineers, will give a presentation during the regularly scheduled Board of Public Works and Safety meeting on April 12, 2018, at 5:00 p.m. to provide an update on the City's draft bicycle/pedestrian master plan. The meeting will be held in the Public Assembly Room at the Lawrence Government Center. Following the meeting, the draft plan will be available on the City's website for a period of thirty (30) days for public comment.

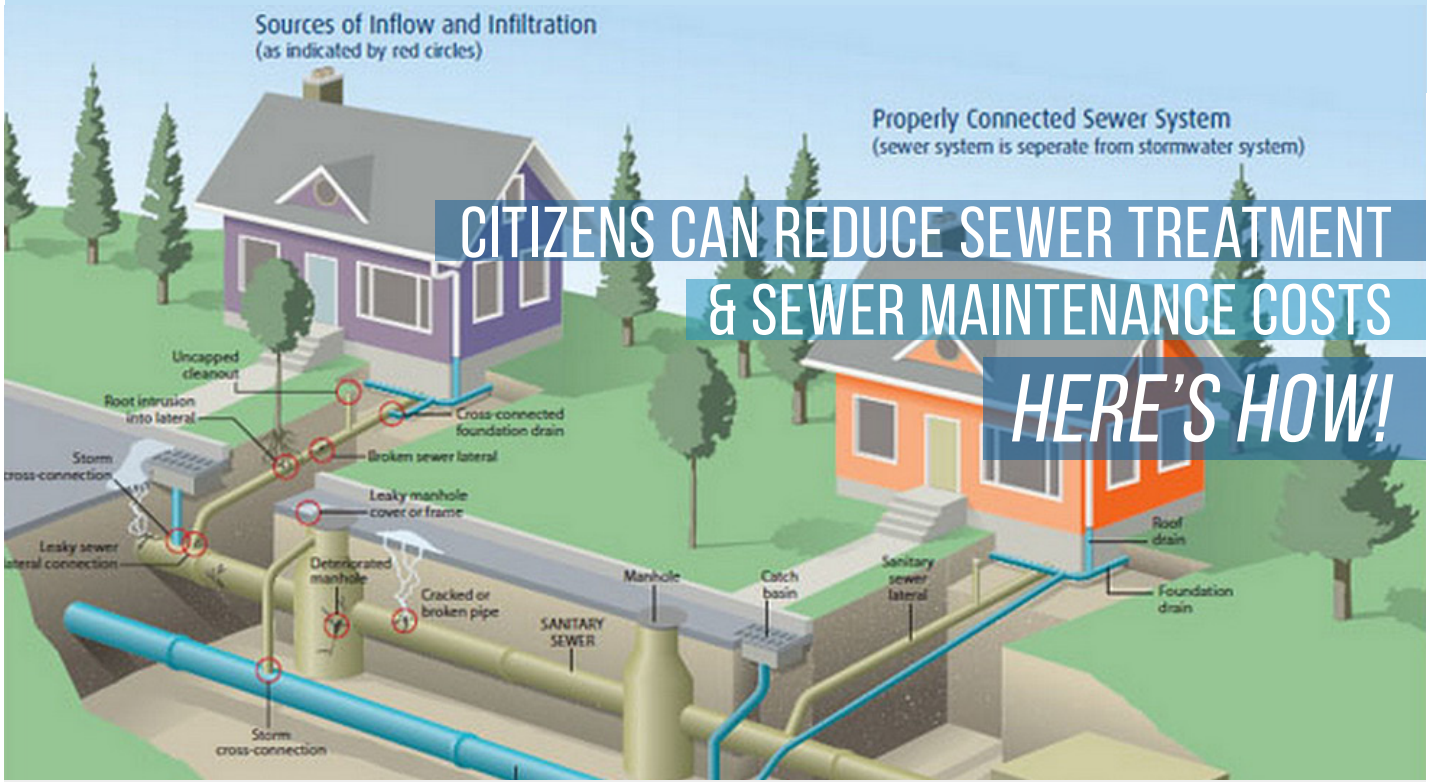
Scott Salsbery  
Utilities Superintendent  
(317) 524-6305  
[ssalsbery@cityoflawrence.org](mailto:ssalsbery@cityoflawrence.org)

## IMPORTANT NOTICES:

Please be advised that the Oaklandon Play Park on Oaklandon Road by the CSX tracks is being closed during the Oaklandon Water Tower Rehabilitation Project. The park is being closed for the safety of the public and the contractors during this much-needed water system improvement project. The park will be closed on or about March 15th and will remain closed through roughly July 3rd.

The Water Utility will be flushing water mains during normal business hours starting Monday, April 2 through Friday, May 4, 2018.

As a result of this activity, some customers may experience a temporary discoloration of their water and/or a low pressure condition. Color can range from light yellow to orange-red. If this occurs, the customer should run a stream of COLD water until the water clears. If a customer is experiencing this problem, they should not run hot water or wash clothes until the water clears up. The City does not reimburse customers for water used to flush their service lines due to discoloration. Main flushing is necessary in order to properly maintain the water distribution system and helps to improve water quality and maintain adequate disinfectant levels per regulatory requirements.



Dear Lawrence Utility Customer,

Although Inflow and Infiltration (I&I) has been addressed in several previous issues of the Lift, it is one of those things that cannot be talked about enough, especially now that we are in the rainy season. Some of the biggest problems we encounter in our sewer system are directly related to substances that are introduced into the system that should not be, mainly clear water sources (I&I) and grease, but also rags, small articles of clothing and heavy-duty paper disposable wipes and towels, which can clog pumps in lift stations. Clear water takes up existing capacity, which leads to poor system performance, Sanitary Sewer Overflow's and other operational problems. Fats, oils and greases (FOG), also cause poor system performance and requires frequent unscheduled sewer cleaning and can also result in sanitary sewer spills or backups into homes and businesses. The introduction of these and other substances is prohibited under the city's sewer ordinance.

Inflow and Infiltration and FOG-related costs result in a significant amount of expense for treatment and unnecessary maintenance that needs to be reduced by all of us being not only aware of these problems, but also implementing practices which will reduce the impact from these prohibited substances and reducing utility costs. There are many sources of I&I including; defective manholes and sewer mains, gutter, roof and foundation drains from homes and businesses as well as sump pumps from homes and businesses. Customers can also wipe pots and pans with paper towels to remove grease, fat and cooking oils and dispose of the towels in the trash instead of letting these things go down the drain. Hot water and Dawn dishwashing detergent do not really address this problem, though many may believe so. While we know and understand that it is impossible to eliminate I&I and grease entirely, it is possible to reduce their impacts dramatically and thereby control costs and lessen future rate impacts.

While the City is responsible to address problems in the public mains, manholes, grinder pumps and lift stations that it owns and operates, property owners also have a responsibility to their neighbors and other utility customers. Together, we can significantly reduce our sewage treatment and sewer system maintenance costs by proactively eliminating I&I and FOG from the sewer system. These measures are very effective ways to reduce the impact of future rate adjustments that will be required due to rising costs.

*The drawing above depicts a typical single-family residential property and some typical sources of I&I as well as a properly connected home.*

Thank you,

Scott Salsbery, Superintendent  
[ssalsbery@cityoflawrence.org](mailto:ssalsbery@cityoflawrence.org)  
 (317) 524-6305