

CITY OF LAWRENCE, INDIANA

ADA TRANSITION PLAN  
for PUBLIC RIGHT-OF-WAY



May 21, 2020

Prepared By: Shrewsberry and Associates, LLC



*Approved by the City Lawrence Board of  
Public Works & Safety on June 25, 2020.*

## INTRODUCTION

The Americans with Disabilities Act (ADA) is a federal law enacted in 1990 to prohibit discrimination based on a disability. The ADA also requires employers to provide reasonable accommodations to employees with disabilities and imposes accessibility requirements on public accommodations.

The ADA is broken into the following sections called titles:

Title I – Employment

Title II – Public Entities (and Public Transportation)

Title III – Public Accommodations (and Commercial Facilities)

Title IV – Telecommunications

Title V - Miscellaneous Provisions

As a public entity, the City of Lawrence is required to meet the requirements of Title II. These regulations are intended to protect individuals with disabilities from discrimination in participating in the programs and services provided by the public entity on the basis of disability.

Title II of the ADA does not specifically list what is considered a disability. Rather, Title II describes disabilities as those that meet the ADA's legal definition. That is, disabilities that place substantial limitation on an individual's major life activities.

This Transition Plan will enable the City of Lawrence to meet the requirements of Title II within their public right-of-way. This will be done by establishing an ADA Coordinator, outlining public notices, establishing a grievance procedure, and setting design standards. This Transition Plan will also establish Lawrence's self-assessment program and include an inventory of existing infrastructure. This inventory will allow Lawrence to establish a timeframe and budget to remedy any shortcomings.

This Transition Plan will focus on Lawrence's public right-of-way. Focus of this plan will be on pedestrian infrastructure such as curb ramps, sidewalk, and trails. Per Title II of the ADA, Lawrence should also work to prohibit discrimination on the basis of disability in all their services, programs, or activities. Lawrence should also work to remove any barriers to physical access within all City owned properties and buildings.

## ADA TRANSITION PLAN

To ensure accessibility within public right-of-way in the City of Lawrence, the City has developed this Transition Plan. This Transition Plan establishes Lawrence's ADA Coordinator, outlines public notices, establishes a grievance procedure, and sets design standards. This Transition Plan will also establish a self-assessment program and include an inventory of existing infrastructure.

## ADA COORDINATOR

The ADA requires public entities with more than 50 employees to designate one employee as responsible for ADA compliance. This employee will be referred to in the City of Lawrence as the ADA Coordinator.

The role of the ADA Coordinator is to coordinate the City of Lawrence's efforts to comply with the ADA, to investigate any complaints of ADA violations against the City of Lawrence, and to serve as the point of contact for individuals with disabilities. The ADA Coordinator will work to address ADA concerns from the general public, city staff, and public officials.

Per the ADA the City of Lawrence is to make available to all interested parties the name, office, address, and telephone number of the employee designated as the ADA Coordinator. The City of Lawrence has established **Sri Venugopalan, P.E.** as the ADA Coordinator for the City. All complaints shall be directed in writing to the ADA Coordinator.

**Sri Venugopalan, P.E.  
9001 East 59th Street  
Lawrence, IN 46216  
(317) 542.4480**

## NOTICE TO PUBLIC

The ADA requires public entities to provide public notice about the ADA to a target audience. The target audience includes everyone who interacts, or could potentially interact, with the City of Lawrence. It may include applicants, beneficiaries, or people interested in programs, activities, or offered services.

The public notice should include relevant information regarding Title II of the ADA, including what the public's rights are under the ADA, what the City's responsibilities are under the ADA, and how the City is meeting ADA requirements. The City of Lawrence will use the public notice format included in Appendix A. The City will also ensure that this is accessible to all by providing various alternative formats (i.e. large print, braille, HTML formatting, etc.) based on the posting location.

The notice is not a one-time requirement and should be published and publicized periodically. The City of Lawrence will do the following to provide the public notice:

- Post the notice on the City website.
- Post the notice in all City facilities.
- Publish a legal notice periodically in local newspapers.

The ADA Coordinator shall be responsible for publishing and publicizing the public notice, ensuring it is available in appropriate alternative formats, and republishing and publicizing the notice periodically.

## GRIEVANCE PROCEDURE

This Grievance Procedure is established to meet the requirements of the Americans with Disabilities Act of 1990. It may be used by anyone who wishes to file a complaint alleging discrimination on the basis of disability in the provision of services, activities, programs, or benefits by the City of Lawrence. The City of Lawrence's Personnel Policy governs employment-related complaints of disability discrimination.

The complaint should be in writing and contain information about the alleged discrimination such as name, address, phone number of complainant and location, date, and description of the problem. Alternative means of filing complaints, such as personal interviews or a tape recording of the complaint, will be made available for persons with disabilities upon request.

The complaint should be submitted by the grievant and/or his/her designee as soon as possible but no later than 60 calendar days after the alleged violation to:

**Sri Venugopalan, P.E.: ADA Coordinator**  
**9001 East 59th Street**  
**Lawrence, IN 46216**

Within 15 calendar days after receipt of the complaint, the ADA Coordinator or his/her designee will meet with the grievant to discuss the complaint and the possible resolutions. Within 15 calendar days of the meeting, the ADA Coordinator or his/her designee will respond in writing, and where appropriate, in a format accessible to the grievant, such as large print, Braille, or audio tape. The response will explain the position of the City of Lawrence and offer options for substantive resolution of the complaint.

If the response by the ADA Coordinator or his/her designee does not satisfactorily resolve the issue, the grievant and/or his/her designee may appeal the decision within 15 calendar days after receipt of the response to the City Mayor or his/her designee.

Within 15 calendar days after receipt of the appeal, the City Mayor or his/her designee will meet with the grievant to discuss the complaint and possible resolutions. Within 15 calendar days after the meeting, the City Mayor or his/her designee will respond in writing, and, where appropriate, in a format accessible to the grievant, with a final resolution of the complaint.

All written complaints received by the ADA Coordinator or his/her designee, appeals to the City Mayor or his/her designee, and responses from these two offices will be retained by the City of Lawrence for at least three years.

## DESIGN STANDARDS

The City of Lawrence has elected to adopt the latest version of the applicable Indiana Department of Transportation's (INDOT) Standard Drawings, Specifications, and Design Manual as the City design standard for facilities within public right-of-way required to meet ADA requirements. Other standards, as necessary, may be applied at the discretion of the ADA Coordinator.

## INVENTORY

In 2010 the Federal Government adopted new accessibility standards called the 2010 ADA Standards for Accessible Design. These standards set the minimum requirements for newly designed and constructed government facilities, public accommodations, and commercial facilities to be readily accessible to and usable by individuals with disabilities.

As the first step, the City of Lawrence elected to inventory their curb ramps to determine which existing curb ramps meet the 2010 ADA requirements. Inventorying their existing curb ramps allowed the City to understand the state of their existing facilities, which in turn will allow the City to properly plan necessary improvements.

This Transition Plan is intended to be a living document that is added to and amended on a regular basis. This will allow the City of Lawrence to update their database as facilities change over time, as well as stay on top of changing and evolving design standards. Finally, it allows the City of Lawrence to inventory their facilities in a cost-efficient way, growing and expanding the inventory as City resources allow.

The City elected to inventory curb ramps based on priority. Three priority levels were assigned as shown below. Curb ramps at the intersection of Level 1 roadways were given the highest priority to be inventoried first, while curb ramps at the intersections of Level 3 roadways were given the lowest priority.

- Level 1: Major roadways and intersections along arterials and thoroughfares with a minimum of 80-foot wide right-of-way.
- Level 2: Roadways and intersections along arterials and thoroughfares with a minimum of 60-foot wide right-of-way.
- Level 3: Single-family residential areas, industrial area, and any areas not classified as Level 1 or Level 2.

**APPENDIX B** shows the roadway prioritizations, and corresponding intersection prioritizations.

**APPENDIX B** also shows the most recent list of inventoried curb ramps and includes table and maps of these curb ramps.

Curb ramps selected to be inventoried were then surveyed in the field for conformance with ADA requirements. Two member teams were used to rate the following curb ramp criteria as sufficient (it met ADA requirements) or deficient (it failed to meet ADA requirements). Curb ramps were then given an overall rating based on these criteria.

- Type of Ramp: Places existing ramp(s) into general categories as outlined in the ADA's Planning and Design for Alterations and INDOT Standard Drawings.
- Width: The side-to-side measurement of a curb ramp. The minimum width varies depending on the curb ramp type but is generally 4 feet minimum.
- Running Slope: Represents the change in vertical grade and cannot exceed a rise of 1:12 (8.33%).
- Cross Slope: Represents the change in vertical grade perpendicular to the running slope. Cross slope cannot exceed a rise of 1:50 (2.0%).

- Level Landing: Provides a flat area where the travel direction changes. Level landings are required to be 4 feet x 4 feet (minimum) with slopes that cannot exceed 1:50 in any direction.
- Wing Slope: Also called flared slopes. Are used to transition curb ramp material back up to surrounding sidewalk grades.
- Detectable Warning Surface: Consist of truncated domes (of a different color than the curb ramp) whose purpose is to provide an indication of the end of the curb ramp.
- Material Type: What the curb ramp is constructed of. In most cases this is either concrete or asphalt.
- Comments: This field allows for the field team to add additional items that may not be included in the standard categories.

*In the Fall of 2019 215 curb ramps were inventoried. Of these curb ramps 39 (18.1%) were found to be noncompliant with ADA requirements. The City of Lawrence will continue to inventory existing curb ramps within the City based on assigned priority levels.*

#### SELF EVALUATION

The City of Lawrence is committed to making all pedestrian facilities within public right-of-way compliant with ADA requirements. To this end, the City will create the following policies and programs:

- Continue to update the curb ramp inventory.
- Creation of a sidewalk and trail inventory.
- All new construction, reconstruction, roadwork construction or alterations under the control of the City of Lawrence will be in compliance with the ADA.
- The City of Lawrence will include sidewalk repair and curb ramp (re)construction in the annual capital projects plan.

#### RESPONSIBLE PERSONNEL

The City of Lawrence is committed to ensuring that this Transition Plan is implemented. In addition to the ADA Coordinator, the following job roles at the City will be responsible for ensuring that this Transition Plan is implemented, as well as continuously updated and amended as facilities change, or are added, over time.

**Sri Venugopalan, P.E.: ADA  
Coordinator  
9001 East 59<sup>th</sup> Street  
Lawrence, IN 46216  
(317) 542.4480**

**Department of Public Works  
9001 East 59<sup>th</sup> Street  
Lawrence, IN 46216  
(317) 545.5566**

#### SCHEDULE AND BUDGET

Following the inventory of all curb ramps within the City of Lawrence the next step should be inventorying existing sidewalk and trails. The inventory of these existing facilities should be prioritized similar to how curb ramps were prioritized based on roadway classifications and right-of-way width. The inventory should include an assessment of the conditions of the facilities and identify locations where additional connections are needed.

Identified deficiencies should be resolved in a timely manner. The resolution of deficiencies should be an ongoing and annual effort. The actual amount of work done to correct deficiencies in any given year will be limited by the financial resources available to the City of Lawrence.

#### MONITORING AND IMPLEMENTING TRANSITION PLAN

The City of Lawrence intends to implement this Transition Plan effective immediately by following the guidelines and recommendations outlined herein. The City of Lawrence will also continuously update and amend this plan as facilities change, or are added, over time.

## CONCLUSION

This ADA Transition Plan for Public Right-of-Way outlines how the City of Lawrence will meet ADA requirements to provide reasonable accommodations and accessibility to public accommodations to persons with disabilities.

This Transition Plan establishes the City of Lawrence's ADA Coordinator who will be responsible for coordinating Lawrence's efforts to comply with ADA requirements, investigate complaints, address grievances, and serve as the point of contact for persons with disabilities. The ADA Coordinator will also ensure the public notice is published and publicized periodically. Finally, the ADA Coordinator, along with the Director of Public Works, will act as responsible personnel to ensure this Transition Plan is implemented.

The City of Lawrence has elected to use INDOT's Standard Drawings, Specifications, and Design Manual as the City design standard for facilities within public right-of-way required to meet ADA requirements. An inventory of Lawrence's existing curb ramps was started along with goals for self-evaluation and resolving deficiencies.

This Transition Plan is intended to be a living document that is added to and amended on a regular basis. The City of Lawrence will continue to inventory and resolve deficiencies to their facilities per the goals outlined in this plan.



APPENDIX A  
PUBLIC NOTICE



## **PUBLIC NOTICE UNDER THE AMERICANS WITH DISABILITIES ACT**

In accordance with the requirements of Title II of the Americans with Disabilities Act of 1990 ("ADA"), the City of Lawrence will not discriminate against qualified individuals with disabilities on the basis of disability in its services, programs, or activities.

**Employment:** The City of Lawrence does not discriminate on the basis of disability in its hiring or employment practices and complies with all regulations promulgated by the U.S. Equal Employment Opportunity Commission under Title I of the ADA.

**Effective Communication:** the City of Lawrence will generally, upon request, provide appropriate aids and services leading to effective communication for qualified persons with disabilities so they can participate equally in the City of Lawrence's programs, services, and activities, including qualified sign language interpreters, documents in Braille, and other ways of making information and communications accessible to people who have speech, hearing, or vision impairments.

**Modifications to Policies and Procedures:** The City of Lawrence will make all reasonable modifications to policies and programs to ensure that people with disabilities have an equal opportunity to enjoy all of its programs, services, and activities. For example, individuals with service animals are welcomed in the City of Lawrence offices, even where pets are generally prohibited.

Anyone who requires an auxiliary aid or service for effective communication, or a modification of policies or procedures to participate in a program, service, or activity of the City of Lawrence, should contact the office of the City of Lawrence ADA Coordinator at the contact information below as soon as possible but no later than 48 hours before the scheduled event.

**Sri Venugopalan, P.E.: ADA Coordinator**  
**9001 East 59th Street**  
**Lawrence, IN 46216**  
**(317) 524-6305**

The ADA does not require the City of Lawrence to take any action that would fundamentally alter the nature of its programs or services, or impose an undue financial or administrative burden.

Complaints that a program, service, or activity of the City of Lawrence is not accessible to persons with disabilities should be directed to the City of Lawrence ADA Coordinator.

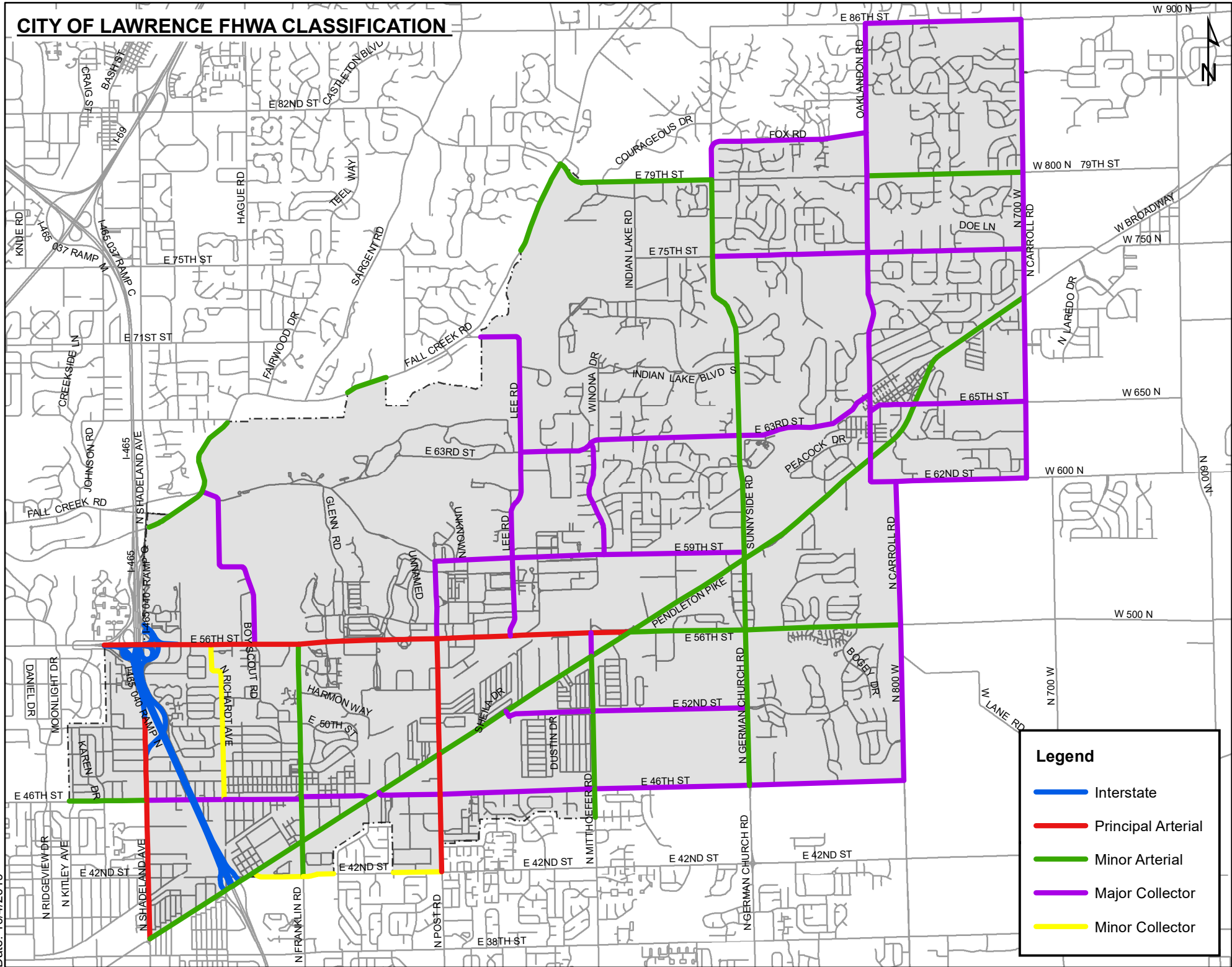
The City of Lawrence will not place a surcharge on a particular individual with a disability or any group of individuals with disabilities to cover the cost of providing auxiliary aids/services or reasonable modifications of policy, such as retrieving items from locations that are open to the public but are not accessible to persons who use wheelchairs.

# APPENDIX B

## INVENTORY

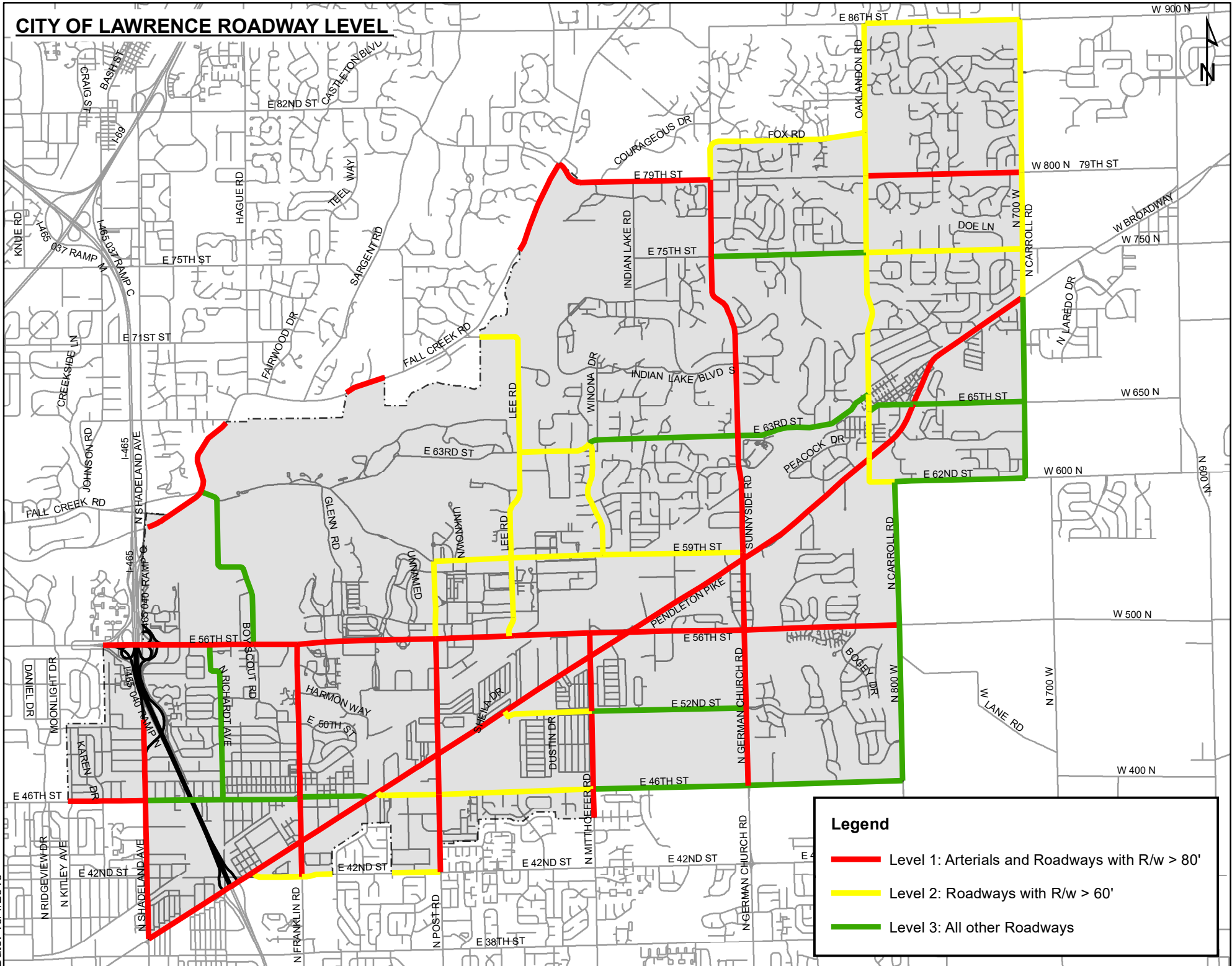


# CITY OF LAWRENCE FHWA CLASSIFICATION



Date: 10/4/2019

# CITY OF LAWRENCE ROADWAY LEVEL



Date: 10/4/2019

**Legend**

- Level 1: Arterials and Roadways with R/w > 80'
- Level 2: Roadways with R/w > 60'
- Level 3: All other Roadways

City of Lawrence Curb Ramp Inventory 2019

| ID   | Municipality | Cross Road 1     | Cross Road 2     | Directional         |                | S = Sufficient D = Deficient N/A = Not Applicable |              |              |               |             |               |                    | Detectable Warning Material | Curb Ramp Type       | Overall Rating | Comments   |
|------|--------------|------------------|------------------|---------------------|----------------|---|--------------|--------------|---------------|-------------|---------------|--------------------|-----------------------------|----------------------|----------------|--|
|      |              |                  |                  | Intersection Corner | Ramp Direction | Width   | Wing 1 Slope | Wing 2 Slope | Running Slope | Cross Slope | Level Landing | Curb Ramp Material |                             |                      |                |  |
| 1000 | Indianapolis | Shadeland Avenue | Pendleton Pike   | NW                  | E              |   |              |              |               |             |               |                    |                             | No Ramp Present      | NR             | SW present. No ramp/crossing of Shadeland present.   |
| 1001 | Lawrence     | Shadeland Avenue | Pendleton Pike   | NE                  | W              |   |              |              |               |             |               |                    |                             | No Ramp Present      | NR             | SW present. No ramp/crossing of Shadeland present.   |
| 1002 | Lawrence     | Shadeland Avenue | 46th Street      | NE                  | W              | S   | S            | S            | S             | S           | S             | Concrete           | Brick                       | Paired Perpendicular | S              |  |
| 1003 | Lawrence     | 46th Street      | Shadeland Avenue | NE                  | S              | S   | N/A          | N/A          | S             | S           | S             | Concrete           | Brick                       | Paired Perpendicular | S              |  |
| 1004 | Lawrence     | Shadeland Avenue | 46th Street      | SE                  | N/E            | S   | N/A          | N/A          | S             | S           | S             | Concrete           | Brick                       | Depressed Corner     | S              |  |
| 1005 | Indianapolis | Shadeland Avenue | 46th Street      | SW                  | E              | S   | N/A          | N/A          | S             | S           | S             | Concrete           | Brick                       | Paired Perpendicular | S              |  |
| 1006 | Indianapolis | 46th Street      | Shadeland Avenue | SW                  | N              | S   | N/A          | N/A          | S             | S           | S             | Concrete           | Brick                       | Paired Perpendicular | S              |  |
| 1007 | Lawrence     | Shadeland Avenue | 46th Street      | NW                  | E/S            | S   | S            | S            | S             | S           | S             | Concrete           | Brick                       | Blended Transition   | S              |  |
| 1008 | Lawrence     | Pendleton Pike   | Franklin Road    | NE                  | S              | S   | S            | S            | S             | S           | S             | Concrete           | Brick                       | Diagonal             | D              | No clear 4 ft pedestrian path at top of ramp.        |
| 1009 | Lawrence     | Pendleton Pike   | Franklin Road    | NW                  | S              | S   | N/A          | N/A          | S             | S           | S             | Concrete           | Brick                       | Parallel             | S              |  |
| 1010 | Lawrence     | Franklin Road    | Pendleton Pike   | NW                  | E              | S   | N/A          | N/A          | S             | S           | S             | Concrete           | Brick                       | Parallel             | S              |  |
| 1011 | Lawrence     | Franklin Road    | Pendleton Pike   | NE                  | W              | S   | S            | S            | S             | S           | S             | Concrete           | Brick                       | Paired Perpendicular | S              | Right Turn Island                                    |
| 1012 | Lawrence     | Pendleton Pike   | Franklin Road    | NE                  | N              | S   | S            | S            | S             | S           | S             | Concrete           | Brick                       | Paired Perpendicular | S              | Right Turn Island                                    |
| 1013 | Lawrence     | Franklin Road    | Pendleton Pike   | SW                  | W              | S   | N/A          | N/A          | S             | S           | S             | Concrete           | Brick                       | Parallel             | S              |  |
| 1014 | Lawrence     | Franklin Road    | Pendleton Pike   | SW                  | E              | S   | S            | S            | S             | S           | S             | Concrete           | Brick                       | Paired Perpendicular | S              | Right Turn Island.                                   |
| 1015 | Lawrence     | Pendleton Pike   | Franklin Road    | SW                  | N              | S   | S            | S            | S             | S           | S             | Concrete           | Brick                       | Paired Perpendicular | S              | Right Turn Island.                                   |
| 1016 | Lawrence     | Pendleton Pike   | Franklin Road    | SW                  | S              | S   | S            | S            | S             | S           | S             | Concrete           | Brick                       | Paired Perpendicular | S              | Right Turn Island.                                   |
| 1017 | Lawrence     | Pendleton Pike   | Franklin Road    | SW                  | N              | S   | S            | S            | S             | S           | S             | Concrete           | Brick                       | Diagonal             | D              | No clear 4 ft pedestrian path at top of ramp.        |
| 1018 | Lawrence     | 56th Street      | Franklin Road    | NW                  | S              | S   | N/A          | N/A          | S             | S           | D             | Concrete           | None                        | Perpendicular        | D              | Pooling water at bottom of ramp.                     |
| 1019 | Lawrence     | 56th Street      | Franklin Road    | NE                  | S              | S   | N/A          | N/A          | S             | S           | S             | Concrete           | None                        | Perpendicular        | D              | Pooling water at bottom of ramp.                     |
| 1020 | Lawrence     | Franklin Road    | 56th Street      | SE                  | W/N            | S   | N/A          | N/A          | S             | S           | D             | Concrete           | None                        | One Way Directional  | D              |  |
| 1021 | Lawrence     | Franklin Road    | 56th Street      | SW                  | E/N            | S   | N/A          | N/A          | S             | D           | D             | Concrete           | None                        | One Way Directional  | D              |  |
| 1022 | Lawrence     | Pendleton Pike   | Post Road        | NW                  | S              | S   | N/A          | N/A          | S             | S           | S             | Concrete           | Brick                       | Perpendicular        | S              |  |
| 1023 | Lawrence     | Post Road        | Pendleton Pike   | NW                  | E              | S   | S            | S            | S             | S           | S             | Concrete           | Brick                       | Parallel             | S              |  |
| 1024 | Lawrence     | Post Road        | Pendleton Pike   | NE                  | W              | S   | S            | S            | S             | S           | S             | Concrete           | Brick                       | Paired Perpendicular | S              |  |
| 1025 | Lawrence     | Pendleton Pike   | Post Road        | NE                  | N              | S   | S            | S            | S             | S           | S             | Concrete           | Brick                       | Paired Perpendicular | S              |  |
| 1026 | Lawrence     | Pendleton Pike   | Post Road        | NE                  | S              | S   | S            | S            | S             | S           | S             | Concrete           | Brick                       | Paired Perpendicular | S              |  |
| 1027 | Lawrence     | Post Road        | Pendleton Pike   | SE                  | W              | S   | N/A          | N/A          | S             | S           | S             | Concrete           | Brick                       | Parallel             | S              |  |
| 1028 | Lawrence     | Pendleton Pike   | Post Road        | NE                  | S              | S   | N/A          | N/A          | S             | S           | S             | Concrete           | Brick                       | Parallel             | S              |  |
| 1029 | Lawrence     | Pendleton Pike   | Post Road        | SW                  | SW             | S   | N/A          | N/A          | S             | S           | S             | Concrete           | Brick                       | Paired Perpendicular | S              |  |
| 1030 | Lawrence     | Post Road        | Pendleton Pike   | SW                  | E              | S   | S            | S            | S             | S           | S             | Concrete           | Brick                       | Paired Perpendicular | S              |  |
| 1031 | Lawrence     | Pendleton Pike   | Post Road        | SW                  | N              | S   | S            | S            | S             | S           | S             | Concrete           | Brick                       | Paired Perpendicular | S              |  |
| 1032 | Lawrence     | 56th Street      | Post Road        | NW                  | S              | D   | D            | D            | D             | D           | D             | Concrete           | None                        | Paired Perpendicular | D              |  |
| 1033 | Lawrence     | Post Road        | 56th Street      | NW                  | E              | D   | D            | D            | D             | D           | D             | Concrete           | None                        | Paired Perpendicular | D              |  |
| 1034 | Lawrence     | Post Road        | 56th Street      | NE                  | W              | D   | D            | D            | D             | D           | D             | Concrete           | None                        | Paired Perpendicular | D              |  |
| 1035 | Lawrence     | 56th Street      | Post Road        | NE                  | S              | D   | D            | D            | D             | D           | D             | Concrete           | None                        | Paired Perpendicular | D              |  |
| 1036 | Lawrence     | 56th Street      | Post Road        | SE                  | N              | D   | D            | D            | D             | D           | D             | Concrete           | None                        | Paired Perpendicular | D              |  |
| 1037 | Lawrence     | Post Road        | 56th Street      | SE                  | W              | D   | D            | D            | D             | D           | D             | Concrete           | None                        | Paired Perpendicular | D              |  |
| 1038 | Lawrence     | Post Road        | 56th Street      | SW                  | E              | D   | D            | D            | D             | D           | D             | Concrete           | None                        | Paired Perpendicular | D              |  |
| 1039 | Lawrence     | 56th Street      | Post Road        | SW                  | N              | D   | D            | D            | D             | D           | D             | Concrete           | None                        | Paired Perpendicular | D              |  |
| 1040 | Lawrence     | Mitthoeffer Road | Pendleton Pike   | NW                  | NE             |   |              |              |               |             |               |                    |                             | No Ramp Present      | NR             | SW present. No ramp/crossing of Mitthoeffer present. |
| 1041 | Lawrence     | Pendleton Pike   | Mitthoeffer Road | NE                  | S              |   |              |              |               |             |               |                    |                             | No Ramp Present      | NR             | SW present. No ramp/crossing of Pendleton present.   |
| 1042 | Lawrence     | Mitthoeffer Road | Pendleton Pike   | NE                  | SW             |   |              |              |               |             |               |                    |                             | No Ramp Present      | NR             | SW present. No ramp/crossing of Mitthoeffer present. |
| 1043 | Lawrence     | Pendleton Pike   | Mitthoeffer Road | SE                  | N              |   |              |              |               |             |               |                    |                             | No Ramp Present      | NR             | SW present. No ramp/crossing of Pendleton present.   |
| 1044 | Lawrence     | Mitthoeffer Road | Pendleton Pike   | SE                  | SW             | S   | S            | S            | S             | S           | S             | Concrete           | Brick                       | Perpendicular        | S              |  |
| 1045 | Lawrence     | Pendleton Pike   | Mitthoeffer Road | SW                  | E/N            | S   | S            | S            | S             | S           | S             | Concrete           | Brick                       | Parallel             | S              |  |
| 1046 | Lawrence     | Pendleton Pike   | Mitthoeffer Road | NW                  | S              | S   | S            | S            | S             | S           | S             | Concrete           | Brick                       | Perpendicular        | S              |  |
| 1047 | Lawrence     | Mitthoeffer Road | 56th Street      | NE                  | W/S            | S   | S            | S            | S             | S           | D             | Concrete           | None                        | Parallel             | D              |  |
| 1048 | Lawrence     | Mitthoeffer Road | 56th Street      | SE                  | W/N            | S   | N/A          | N/A          | S             | S           | S             | Concrete           | Plastic                     | Perpendicular        | S              |  |
| 1049 | Lawrence     | Mitthoeffer Road | 56th Street      | SW                  | E/N            | S   | S            | S            | S             | S           | S             | Concrete           | None                        | Blended Transition   | D              |  |
| 1050 | Lawrence     | Mitthoeffer Road | 56th Street      | NW                  | E/S            | S   | S            | S            | S             | S           | S             | Concrete           | None                        | Blended Transition   | D              |  |
| 1051 | Lawrence     | 56th Street      | Pendleton Pike   | NW                  | S              |   |              |              |               |             |               |                    |                             | No Ramp Present      | NR             | SW present. No ramp/crossing of 56th present.        |
| 1052 | Lawrence     | Pendleton Pike   | 56th Street      | NW                  | E              |   |              |              |               |             |               |                    |                             | No Ramp Present      | NR             | SW present. No ramp/crossing of Pendleton present.   |
| 1053 | Lawrence     | Pendleton Pike   | 56th Street      | NE                  | W              |   |              |              |               |             |               |                    |                             | No Ramp Present      | NR             | SW present. No ramp/crossing of Pendleton present.   |
| 1054 | Lawrence     | 56th Street      | Pendleton Pike   | NE                  | S              |   |              |              |               |             |               |                    |                             | No Ramp Present      | NR             | SW present. No ramp/crossing of 56th present.        |
| 1055 | Lawrence     | Sunnyside Road   | 56th Street      | NE                  | W              | S   | N/A          | N/A          | S             | S           | S             | Concrete           | Brick                       | Perpendicular        | S              |  |
| 1056 | Lawrence     | Sunnyside Road   | Pendleton Pike   | NW                  | NE             | S   | N/A          | N/A          | S             | S           | S             | Concrete           | Brick                       | Parallel             | S              |  |
| 1057 | Lawrence     | Sunnyside Road   | Pendleton Pike   | NE                  | SW             | S   | N/A          | N/A          | S             | S           | S             | Concrete           | Brick                       | Paired Perpendicular | S              |  |
| 1058 | Lawrence     | Pendleton Pike   | Sunnyside Road   | NE                  | S              | S   | N/A          | N/A          | S             | S           | S             | Concrete           | Brick                       | Paired Perpendicular | S              |  |
| 1059 | Lawrence     | Pendleton Pike   | Sunnyside Road   | NE                  | NE             | S   | N/A          | N/A          | S             | S           | S             | Concrete           | Brick                       | Paired Perpendicular | S              |  |
| 1060 | Lawrence     | Pendleton Pike   | Sunnyside Road   | NE                  | SW             | S   | N/A          | N/A          | S             | S           | S             | Concrete           | Brick                       | Parallel             | S              |  |
| 1061 | Lawrence     | Pendleton Pike   | Sunnyside Road   | SE                  | N              | S   | S            | S            | S             | S           | S             | Concrete           | Brick                       | Perpendicular        | S              |  |
| 1062 | Lawrence     | Sunnyside Road   | Pendleton Pike   | SE                  | SW             | S   | S            | S            | S             | S           | S             | Concrete           | Brick                       | Parallel             | S              |  |
| 1063 | Lawrence     | Sunnyside Road   | Pendleton Pike   | SW                  | E              | S   | S            | S            | S             | S           | S             | Concrete           | Brick                       | Paired Perpendicular | S              |  |
| 1064 | Lawrence     | Pendleton Pike   | Sunnyside Road   | SW                  | SW             | S   | S            | S            | S             | S           | S             | Concrete           | Brick                       | Paired Perpendicular | S              |  |
| 1065 | Lawrence     | Pendleton Pike   | Sunnyside Road   | SW                  | NE             | S   | S            | S            | S             | S           | S             | Concrete           | Brick                       | Parallel             | S              |  |
| 1066 | Lawrence     | Sunnyside Road   | 79th Street      | SE                  | W              | S   | N/A          | N/A          | S             | S           | S             | Concrete           | None                        | One Way Directional  | D              |  |

City of Lawrence Curb Ramp Inventory 2019

| ID   | Municipality   | Cross Road 1       | Cross Road 2    | Directional         |                | S = Sufficient D = Deficient N/A = Not Applicable |              |              |               |             |               |                    | Detectable Warning Material | Curb Ramp Type       | Overall Rating | Comments  |
|------|----------------|--------------------|-----------------|---------------------|----------------|---|--------------|--------------|---------------|-------------|---------------|--------------------|-----------------------------|----------------------|----------------|---|
|      |                |                    |                 | Intersection Corner | Ramp Direction | Width   | Wing 1 Slope | Wing 2 Slope | Running Slope | Cross Slope | Level Landing | Curb Ramp Material |                             |                      |                |   |
| 1067 | Lawrence       | Carroll Road       | Pendleton Pike  | SW                  | NE             | S   | S            | S            | S             | S           | D             | Concrete           | Brick                       | One Way Directional  | D              |   |
| 1068 | McCordsville   | Carroll Road       | Pendleton Pike  | SE                  | SW             | S   | S            | S            | S             | S           | S             | Concrete           | Brick                       | One Way Directional  | S              |   |
| 1069 | Lawrence       | Pendleton Pike     | Oaklandon Road  | NW                  | SE             | S   | S            | S            | S             | S           | S             | Concrete           | Plastic                     | Perpendicular        | S              |   |
| 1070 | Lawrence       | Oaklandon Road     | Pendleton Pike  | NW                  | NE             | S   | S            | S            | S             | S           | S             | Concrete           | Brick                       | Parallel             | S              |   |
| 1071 | Lawrence       | Oaklandon Road     | Pendleton Pike  | NE                  | SW             | S   | S            | S            | S             | S           | S             | Concrete           | Brick                       | Paired Perpendicular | S              |   |
| 1072 | Lawrence       | Pendleton Pike     | Oaklandon Road  | NE                  | SE             | S   | S            | S            | S             | S           | S             | Concrete           | Brick                       | Paired Perpendicular | S              |   |
| 1073 | Lawrence       | Pendleton Pike     | Oaklandon Road  | NE                  | NE             | S   | S            | S            | S             | S           | S             | Concrete           | Brick                       | Paired Perpendicular | S              |   |
| 1074 | Lawrence       | Pendleton Pike     | Oaklandon Road  | NE                  | SW             | S   | S            | S            | S             | S           | S             | Concrete           | Brick                       | Parallel             | S              |   |
| 1075 | Lawrence       | Pendleton Pike     | Oaklandon Road  | SE                  | NW             | S   | S            | S            | S             | S           | S             | Concrete           | Brick                       | Perpendicular        | S              |   |
| 1076 | Lawrence       | Oaklandon Road     | Pendleton Pike  | SE                  | W              | S   | S            | S            | S             | S           | S             | Concrete           | Brick                       | Parallel             | S              |   |
| 1077 | Lawrence       | Oaklandon Road     | Pendleton Pike  | SW                  | E              | S   | S            | S            | S             | S           | S             | Concrete           | Brick                       | Paired Perpendicular | S              |   |
| 1078 | Lawrence       | Pendleton Pike     | Oaklandon Road  | SW                  | NW             | S   | S            | S            | S             | S           | S             | Concrete           | Brick                       | Paired Perpendicular | S              |   |
| 1079 | Lawrence       | Pendleton Pike     | Oaklandon Road  | SW                  | SW             | S   | S            | S            | S             | S           | S             | Concrete           | Brick                       | Paired Perpendicular | S              |   |
| 1080 | Lawrence       | Pendleton Pike     | Oaklandon Road  | SW                  | NE             | S   | S            | S            | S             | S           | S             | Concrete           | Brick                       | Parallel             | S              |   |
| 1081 | Lawrence       | 52nd Street        | Pendleton Pike  | S                   | NE             | S   | S            | S            | S             | S           | D             | Concrete           | Cast Iron                   | One Way Directional  | D              | Detectable warning not edge to edge                               |
| 1082 | Lawrence       | 52nd Street        | Pendleton Pike  | E                   | SW             | S   | S            | S            | S             | S           | D             | Concrete           | Cast Iron                   | Blended Transition   | D              |   |
| 1083 | Lawrence       | 46th Street        | Pendleton Pike  | S                   | NE             | S   | N/A          | N/A          | S             | S           | S             | Concrete           | Brick                       | One Way Directional  | D              | Detectable warning not edge to edge                               |
| 1084 | Lawrence       | 46th Street        | Pendleton Pike  | E                   | SW             | S   | N/A          | N/A          | S             | S           | D             | Concrete           | Brick                       | One Way Directional  | D              | Detectable warning not edge to edge                               |
| 1085 | Lawrence       | 56th Street        | Richardt Avenue | NW                  | E              | S   | N/A          | N/A          | S             | D           | D             | Concrete           | Plastic                     | One Way Directional  | D              | Sidewalk and ramp may not be within City R/w.                     |
| 1086 | Lawrence       | 56th Street        | Richardt Avenue | N                   | E/W            | S   | S            | S            | S             | S           | S             | Concrete           | Plastic                     | Median Cut Through   | S              | Sidewalk and ramp may not be within City R/w.                     |
| 1087 | Lawrence       | Richardt Avenue    | 56th Street     | NE                  | W/S            | S   | S            | S            | S             | S           | S             | Concrete           | Plastic                     | Depressed Corner     | S              |   |
| 1088 | Lawrence       | Richardt Avenue    | 56th Street     | SE                  | W/N            | S   | S            | S            | S             | S           | S             | Concrete           | Plastic                     | Depressed Corner     | S              | Sidewalk and ramp may not be within City R/w.                     |
| 1089 | Lawrence       | 56th Street        | Richardt Avenue | SW                  | E              | D   | S            | S            | S             | S           | D             | Concrete           | Plastic                     | Parallel             | D              | Ramp not 6 feet wide, no level landing.                           |
| 1090 | Lawrence       | 56th Street        | Boy Scout Road  | NW                  | S/E            | S   | S            | S            | S             | S           | S             | Concrete           | Plastic                     | One Way Directional  | S              |   |
| 1091 | Lawrence       | 56th Street        | Boy Scout Road  | NE                  | S/W            | S   | N/A          | N/A          | S             | S           | S             | Concrete           | Plastic                     | One Way Directional  | D              | Detectable warning not edge to edge                               |
| 1092 | Lawrence       | 56th Street        | Boy Scout Road  | SE                  | N/W            | S   | N/A          | N/A          | S             | S           | S             | Concrete           | Plastic                     | One Way Directional  | S              |   |
| 1093 | Lawrence       | 56th Street        | Boy Scout Road  | SW                  | N/E            | S   | N/A          | N/A          | S             | S           | S             | Concrete           | Plastic                     | One Way Directional  | D              | Detectable warning not edge to edge                               |
| 1094 | Lawrence       | 56th Street        | Lee Road        | SW                  | N              | S   | S            | S            | S             | S           | S             | Conc/Asph          | None                        | Perpendicular        | D              |   |
| 1095 | Lawrence       | Lee Road           | 56th Street     | NE                  | W              | S   | N/A          | N/A          | S             | D           | D             | Concrete           | None                        | Perpendicular        | D              |   |
| 1096 | Lawrence       | Lee Road           | 56th Street     | NW                  | E              | S   | S            | S            | S             | S           | S             | Concrete           | None                        | Perpendicular        | D              |   |
| 1097 | Lawrence       | 46th Street        | Richardt Avenue | NE                  | S/W            | S   | S            | S            | S             | S           | S             | Concrete           | Brick                       | Parallel             | S              |   |
| 1098 | Lawrence       | Richardt Avenue    | 46th Street     | SE                  | N/W            | S   | S            | S            | S             | S           | S             | Concrete           | Brick                       | Perpendicular        | S              |   |
| 1099 | Lawrence       | Richardt Avenue    | 46th Street     | SW                  | E              | S   | S            | S            | S             | S           | S             | Concrete           | Brick                       | Parallel             | S              |   |
| 1100 | Lawrence       | Carroll Road       | 56th Street     | NW                  |                |   |              |              |               |             |               |                    |                             | No ramp present      | NR             | No ramp or sidewalk is present at this intersection.              |
| 1101 | Hancock County | Carroll Road       | 56th Street     | NE                  |                |   |              |              |               |             |               |                    |                             | No ramp present      | NR             | No ramp or sidewalk is present at this intersection.              |
| 1102 | Hancock County | Carroll Road       | 56th Street     | SE                  |                |   |              |              |               |             |               |                    |                             | No ramp present      | NR             | No ramp or sidewalk is present at this intersection.              |
| 1103 | Lawrence       | Carroll Road       | 56th Street     | SW                  |                |   |              |              |               |             |               |                    |                             | No ramp present      | NR             | No ramp or sidewalk is present at this intersection.              |
| 1104 | Indianapolis   | Fall Creek Parkway | 79th Street     | N                   | SE             | S   | S            | S            | S             | S           | S             |                    | Brick                       | Parallel             | S              |   |
| 1105 | Indianapolis   | Fall Creek Parkway | 79th Street     | E                   | N/S            | S   | S            | S            | S             | S           | S             |                    | Brick                       | Parallel             | S              |   |
| 1106 | Lawrence       | Fall Creek Parkway | 79th Street     | S                   | NE             | S   | S            | S            | S             | S           | S             |                    | Brick                       | Parallel             | S              |   |
| 1107 | Indianapolis   | Fall Creek Parkway | 79th Street     | W                   |                |   |              |              |               |             |               |                    |                             | No ramp present      | NR             |   |
| 1108 | Lawrence       | 56th Street        | Lee Road        | NW                  | S              | S   | S            | S            | S             | S           | S             |                    | None                        | Perpendicular        | D              |   |
| 1109 | Lawrence       | Sunnyside Road     | 63rd Street     | NW                  | E/S            |   |              |              |               |             |               |                    |                             | No Ramp Present      | NR             | No sidewalk or ramp present                                       |
| 1110 | Lawrence       | Sunnyside Road     | 63rd Street     | NE                  | W              | S   | S            | S            | S             | S           | S             | Concrete           | Brick                       | Perpendicular        | S              |   |
| 1111 | Lawrence       | 63rd Street        | Sunnyside Road  | NE                  | S              |   |              |              |               |             |               |                    |                             | No Ramp Present      | NR             | Sidewalk is present. No ramp/crossing of 63rd Street is Present   |
| 1112 | Lawrence       | 63rd Street        | Sunnyside Road  | SE                  | N/W            |   |              |              |               |             |               |                    |                             | No Ramp Present      | NR             | No sidewalk or ramp present                                       |
| 1113 | Lawrence       | 63rd Street        | Sunnyside Road  | SW                  | N/E            |   |              |              |               |             |               |                    |                             | No Ramp Present      | NR             | No sidewalk or ramp present                                       |
| 1114 | Lawrence       | 86th Street        | Oaklandon Road  | NW                  | S/E            |   |              |              | D             | D           | D             | Concrete           | None                        | Parallel             | D              | Railing has been placed across depressed curb to prevent crossing |
| 1115 | Lawrence       | Oaklandon Road     | 86th Street     | NE                  | S/W            |   |              |              | D             | D           | D             | Concrete           | None                        | One Way Directional  | D              | Sidewalk is present. No ramp/crossing of 63rd Street is Present   |
| 1116 | Lawrence       | 86th Street        | Oaklandon Road  | SW                  | N/E            |   |              |              |               |             |               |                    |                             | No Ramp Present      | NR             | No sidewalk or ramp present                                       |
| 1117 | Lawrence       | Oaklandon Road     | 86th Street     | SE                  | N/W            |   |              |              |               |             |               |                    |                             | No Ramp Present      | NR             | No sidewalk or ramp present                                       |
| 1118 | Lawrence       | 86th Street        | Carroll Road    | SW                  | E/N            |   |              |              |               |             |               |                    |                             | No Ramp Present      | NR             | No sidewalk or ramp present                                       |
| 1119 | McCordsville   | 86th Street        | Carroll Road    | SE                  | W/N            |   |              |              |               |             |               |                    |                             | No Ramp Present      | NR             | No sidewalk or ramp present                                       |
| 1120 | McCordsville   | 86th Street        | Carroll Road    | NE                  | W/S            |   |              |              |               |             |               |                    |                             | No Ramp Present      | NR             | No sidewalk or ramp present                                       |
| 1121 | Lawrence       | 86th Street        | Carroll Road    | NW                  | E/S            |   |              |              |               |             |               |                    |                             | No Ramp Present      | NR             | No sidewalk or ramp present                                       |
| 1122 | Lawrence       | 79th Street        | Carroll Road    | NW                  | E/S            |   |              |              |               |             |               |                    |                             | No Ramp Present      | NR             | No sidewalk or ramp present                                       |
| 1123 | McCordsville   | 79th Street        | Carroll Road    | NE                  | W/S            |   |              |              |               |             |               |                    |                             | No Ramp Present      | NR             | No sidewalk or ramp present                                       |
| 1124 | McCordsville   | 79th Street        | Carroll Road    | SE                  | W/N            |   |              |              |               |             |               |                    |                             | No Ramp Present      | NR             | No sidewalk or ramp present                                       |
| 1125 | Lawrence       | 79th Street        | Carroll Road    | SW                  | E/N            |   |              |              |               |             |               |                    |                             | No Ramp Present      | NR             | No sidewalk or ramp present                                       |
| 1126 | Lawrence       | 75th Street        | Oaklandon Road  | NW                  | E/S            |   |              |              |               |             |               |                    |                             | No Ramp Present      | NR             | No sidewalk or ramp present                                       |
| 1127 | Lawrence       | 75th Street        | Oaklandon Road  | NE                  | W/S            |   |              |              |               |             |               |                    |                             | No Ramp Present      | NR             | No sidewalk or ramp present                                       |
| 1128 | Lawrence       | 75th Street        | Oaklandon Road  | SE                  | W/N            |   |              |              |               |             |               |                    |                             | No Ramp Present      | NR             | No sidewalk or ramp present                                       |
| 1129 | Lawrence       | 75th Street        | Oaklandon Road  | SW                  | E/N            |   |              |              |               |             |               |                    |                             | No Ramp Present      | NR             | No sidewalk or ramp present                                       |
| 1130 | Lawrence       | 75th Street        | Sunnyside Road  | NW                  | E/S            |   |              |              |               |             |               |                    |                             | No Ramp Present      | NR             | No sidewalk or ramp present                                       |
| 1131 | Lawrence       | 75th Street        | Sunnyside Road  | NE                  | W/S            |   |              |              |               |             |               |                    |                             | No Ramp Present      | NR             | No sidewalk or ramp present                                       |
| 1132 | Lawrence       | 75th Street        | Sunnyside Road  | SE                  | W/N            |   |              |              |               |             |               |                    |                             | No Ramp Present      | NR             | No sidewalk or ramp present                                       |
| 1133 | Lawrence       | 75th Street        | Sunnyside Road  | SW                  | E/N            |   |              |              |               |             |               |                    |                             | No Ramp Present      | NR             | No sidewalk or ramp present                                       |

City of Lawrence Curb Ramp Inventory 2019

| ID   | Municipality | Cross Road 1       | Cross Road 2       | Directional         |                | S = Sufficient |              |              |               |             |               |                    | D = Deficient               |                      | N/A = Not Applicable |   | Comments                     |
|------|--------------|--------------------|--------------------|---------------------|----------------|----------------|--------------|--------------|---------------|-------------|---------------|--------------------|-----------------------------|----------------------|----------------------|---|------------------------------|
|      |              |                    |                    | Intersection Corner | Ramp Direction | Width          | Wing 1 Slope | Wing 2 Slope | Running Slope | Cross Slope | Level Landing | Curb Ramp Material | Detectable Warning Material | Curb Ramp Type       | Overall Rating       |   |                              |
| 1134 | Lawrence     | Lee Road           | 63rd Street        | NW                  | E/S            |                |              |              |               |             |               |                    |                             |                      | No Ramp Present      | NR  | No sidewalk or ramp present  |
| 1135 | Lawrence     | Lee Road           | 63rd Street        | NE                  | W/S            |                |              |              |               |             |               |                    |                             |                      | No Ramp Present      | NR  | No sidewalk or ramp present  |
| 1136 | Lawrence     | Lee Road           | 63rd Street        | SE                  | W/N            |                |              |              |               |             |               |                    |                             |                      | No Ramp Present      | NR  | No sidewalk or ramp present  |
| 1137 | Lawrence     | Lee Road           | 63rd Street        | SW                  | E/N            |                |              |              |               |             |               |                    |                             |                      | No Ramp Present      | NR  | No sidewalk or ramp present  |
| 1138 | Lawrence     | Boy Scout Road     | Fall Creek Road    | NE                  | S              | S              | N/A          | N/A          | S             | S           | S             | Concrete           | Brick                       | Parallel             | S                    |   |                              |
| 1139 | Lawrence     | Boy Scout Road     | Fall Creek Road    | SE                  | N              | S              | N/A          | N/A          | S             | S           | S             | Concrete           | Brick                       | Perpendicular        | S                    |   |                              |
| 1140 | Lawrence     | Post Road          | 59th Street        | SW                  | N/W            |                |              |              |               |             |               |                    |                             |                      | No Ramp Present      | NR  | No sidewalk or ramp present. |
| 1141 | Lawrence     | Post Road          | 59th Street        | SE                  | W              | S              | N/A          | N/A          | S             | S           | S             | Concrete           | Cast Iron                   | Paired Perpendicular | S                    |   |                              |
| 1142 | Lawrence     | 59th Street        | Post Road          | SE                  | N              | S              | N/A          | N/A          | S             | S           | S             | Concrete           | Cast Iron                   | Paired Perpendicular | S                    |   |                              |
| 1143 | Lawrence     | 59th Street        | Post Road          | NE                  | S              | S              | N/A          | N/A          | S             | S           | S             | Concrete           | Cast Iron                   | Perpendicular        | S                    |   |                              |
| 1144 | Lawrence     | 59th Street        | Post Road          | NW                  | S              | S              | N/A          | N/A          | S             | S           | S             | Concrete           | Cast Iron                   | Perpendicular        | S                    |   |                              |
| 1145 | Lawrence     | 59th Street        | Lee Road           | NW                  | E/S            | S              | N/A          | N/A          | S             | S           | S             | Concrete           | Plastic                     | Parallel             | S                    |   |                              |
| 1146 | Lawrence     | 59th Street        | Lee Road           | NE                  | W/S            | S              | S            | S            | S             | S           | S             | Concrete           | Brick                       | Parallel             | S                    |   |                              |
| 1147 | Lawrence     | 59th Street        | Lee Road           | SE                  | W/N            | S              | S            | S            | S             | S           | S             | Concrete           | Brick                       | Parallel             | S                    |   |                              |
| 1148 | Lawrence     | 59th Street        | Lee Road           | SW                  | E/N            | S              | S            | S            | S             | S           | S             | Concrete           | Plastic                     | Parallel             | S                    |   |                              |
| 1149 | Lawrence     | German Church Road | 52nd Street        | NW                  | S/E            |                |              |              |               |             |               |                    | Plastic                     | No Ramp Present      | NR                   | No sidewalk or ramp present.                              |                              |
| 1150 | Lawrence     | 52nd Street        | German Church Road | NE                  | S              |                |              |              | S             | S           | S             | Concrete           | Brick                       | Perpendicular        | S                    |   |                              |
| 1151 | Lawrence     | 52nd Street        | German Church Road | SE                  | N              | S              | S            | S            | S             | S           | S             | Concrete           | Brick                       | Perpendicular        | S                    |   |                              |
| 1152 | Lawrence     | German Church Road | 52nd Street        | SW                  | N/E            |                |              |              |               |             |               |                    | Brick                       | No Ramp Present      | NR                   | No sidewalk or ramp present.                              |                              |
| 1153 | Lawrence     | 46th Street        | German Church Road | NW                  | S              | S              | S            | S            | S             | S           | S             | Concrete           | Brick                       | Perpendicular        | S                    | Vegetative overgrowth                                     |                              |
| 1154 | Lawrence     | 46th Street        | German Church Road | W                   | S/N            | S              | N/A          | N/A          | S             | S           | S             | Concrete           | Brick                       | Center Island        | S                    | Vegetative overgrowth                                     |                              |
| 1155 | Lawrence     | 46th Street        | German Church Road | SW                  | N              | S              | S            | S            | S             | S           | S             | Concrete           | Brick                       | Parallel             | S                    | Vegetative overgrowth                                     |                              |
| 1156 | Lawrence     | German Church Road | 46th Street        | NE                  | W              | S              | S            | S            | S             | S           | S             | Concrete           | Brick                       | Perpendicular        | S                    |   |                              |
| 1157 | Lawrence     | German Church Road | 46th Street        | N                   | E/W            | S              | N/A          | N/A          | S             | S           | S             | Concrete           | Brick                       | Center Island        | S                    | Vegetative overgrowth                                     |                              |
| 1158 | Lawrence     | German Church Road | 46th Street        | NW                  | W              | S              | N/A          | N/A          | S             | S           | S             | Concrete           | Brick                       | Perpendicular        | S                    |   |                              |
| 1159 | Lawrence     | 46th Street        | German Church Road | SE                  | N              | S              | S            | S            | S             | S           | S             | Concrete           | Brick                       | Perpendicular        | S                    | Vegetative overgrowth                                     |                              |
| 1160 | Lawrence     | 46th Street        | German Church Road | E                   | N/S            | S              | N/A          | N/A          | S             | S           | S             | Concrete           | Brick                       | Center Island        | S                    | Vegetative overgrowth                                     |                              |
| 1161 | Lawrence     | 46th Street        | German Church Road | NE                  | S              | S              | S            | S            | S             | S           | S             | Concrete           | Brick                       | Perpendicular        | S                    | Vegetative overgrowth                                     |                              |
| 1162 | Indianapolis | German Church Road | 46th Street        | SE                  | W              | S              | S            | S            | S             | S           | S             | Concrete           | Brick                       | Perpendicular        | S                    | Vegetative overgrowth                                     |                              |
| 1163 | Indianapolis | German Church Road | 46th Street        | S                   | E/W            | S              | N/A          | N/A          | S             | S           | S             | Concrete           | Brick                       | Center Island        | S                    | Vegetative overgrowth                                     |                              |
| 1164 | Indianapolis | German Church Road | 46th Street        | SW                  | E              | S              | S            | S            | S             | S           | S             | Concrete           | Brick                       | Parallel             | S                    | Vegetative overgrowth                                     |                              |
| 1165 | Indianapolis | 46th Street        | Mitthoeffer Road   | SW                  | E/N            |                |              |              |               |             |               |                    |                             | No ramp present      | NR                   | No ramp or sidewalk present                               |                              |
| 1166 | Indianapolis | 46th Street        | Mitthoeffer Road   | SE                  | W/N            |                |              |              |               |             |               |                    |                             | No ramp present      | NR                   | No ramp or sidewalk present                               |                              |
| 1167 | Lawrence     | 46th Street        | Mitthoeffer Road   | NE                  | W/S            |                |              |              |               |             |               |                    |                             | No ramp present      | NR                   | No ramp or sidewalk present                               |                              |
| 1168 | Lawrence     | 46th Street        | Mitthoeffer Road   | NW                  | E/S            |                |              |              |               |             |               |                    |                             | No ramp present      | NR                   | No ramp or sidewalk present                               |                              |
| 1169 | Lawrence     | Post Road          | 46th Street        | SW                  | N/E            | S              | N/A          | N/A          | D             | D           | D             | Concrete           | Brick                       | One Way Directional  | D                    |   |                              |
| 1170 | Lawrence     | Post Road          | 46th Street        | SE                  | N/W            | S              | N/A          | N/A          | D             | D           | D             | Concrete           | Brick                       | One Way Directional  | D                    |   |                              |
| 1171 | Lawrence     | Post Road          | 46th Street        | NE                  | S/W            | S              | N/A          | N/A          | D             | D           | D             | Concrete           | Brick                       | One Way Directional  | D                    |   |                              |
| 1172 | Lawrence     | Post Road          | 46th Street        | NW                  | S/E            | S              | N/A          | N/A          | D             | D           | D             | Concrete           | Brick                       | One Way Directional  | D                    |   |                              |
| 1173 | Indianapolis | Post Road          | 42nd Street        | SW                  | E/S            | S              | N/A          | N/A          | S             | S           | S             | Concrete           | Brick                       | Parallel             | S                    |   |                              |
| 1174 | Indianapolis | Post Road          | 42nd Street        | SE                  | W/N            | S              | N/A          | N/A          | S             | S           | S             | Concrete           | Brick                       | Parallel             | S                    |   |                              |
| 1175 | Lawrence     | Post Road          | 42nd Street        | NW                  | E/S            | S              | N/A          | N/A          | S             | S           | S             | Concrete           | Brick                       | Parallel             | S                    |   |                              |
| 1176 | Indianapolis | Post Road          | 42nd Street        | NE                  | W/S            | S              | N/A          | N/A          | S             | S           | S             | Concrete           | Brick                       | Parallel             | S                    |   |                              |
| 1177 | Lawrence     | 42nd Street        | Franklin Road      | NW                  | E              | S              | S            | S            | S             | S           | S             | Concrete           | Brick                       | Paired Perpendicular | S                    | Vegetative overgrowth                                     |                              |
| 1178 | Lawrence     | 42nd Street        | Franklin Road      | NW                  | S              | S              | S            | S            | S             | S           | S             | Concrete           | Brick                       | Paired Perpendicular | S                    | Vegetative overgrowth                                     |                              |
| 1179 | Lawrence     | 42nd Street        | Franklin Road      | NE                  | S              | S              | S            | S            | S             | S           | S             | Concrete           | Brick                       | Paired Perpendicular | S                    | Vegetative overgrowth                                     |                              |
| 1180 | Lawrence     | 42nd Street        | Franklin Road      | NE                  | W              | S              | S            | S            | S             | S           | S             | Concrete           | Brick                       | Paired Perpendicular | S                    | Vegetative overgrowth                                     |                              |
| 1181 | Indianapolis | 42nd Street        | Franklin Road      | SW                  | N              | S              | S            | S            | S             | S           | S             | Concrete           | Brick                       | Paired Perpendicular | S                    | Vegetative overgrowth                                     |                              |
| 1182 | Indianapolis | Franklin Road      | 42nd Street        | SW                  | E              | S              | S            | S            | S             | S           | S             | Concrete           | Brick                       | Paired Perpendicular | S                    | Vegetative overgrowth                                     |                              |
| 1183 | Indianapolis | Franklin Road      | 42nd Street        | SE                  | W              | S              | S            | S            | S             | S           | S             | Concrete           | Brick                       | Paired Perpendicular | S                    | Vegetative overgrowth                                     |                              |
| 1184 | Indianapolis | 42nd Street        | Franklin Road      | SE                  | N              | S              | S            | S            | S             | S           | S             | Concrete           | Brick                       | Paired Perpendicular | S                    | Vegetative overgrowth                                     |                              |
| 1185 | Lawrence     | 62nd Street        | Carroll Road       | SW                  | N/E            |                |              |              |               |             |               |                    |                             | No Ramp Present      | NR                   | No sidewalk or ramp. Carroll Road nearest Pendleton Pike. |                              |
| 1186 | Lawrence     | 62nd Street        | Carroll Road       | NE                  | S/W            |                |              |              |               |             |               |                    |                             | No Ramp Present      | NR                   | No sidewalk or ramp. Carroll Road nearest Pendleton Pike. |                              |
| 1187 | Lawrence     | 62nd Street        | Carroll Road       | NW                  | S/E            |                |              |              |               |             |               |                    |                             | No Ramp Present      | NR                   | No sidewalk or ramp. Carroll Road nearest Pendleton Pike. |                              |
| 1188 | Indianapolis | 62nd Street        | Carroll Road       | SE                  | N/W            |                |              |              |               |             |               |                    |                             | No Ramp Present      | NR                   | No sidewalk or ramp. Carroll Road nearest Pendleton Pike. |                              |
| 1189 | Indianapolis | Oaklandon Road     | Fox Road           | NW                  | S/E            | S              | N/A          | N/A          | D             | D           | D             | Concrete           | None                        | Parallel             | D                    |   |                              |
| 1190 | Lawrence     | Oaklandon Road     | Fox Road           | NE                  | S/W            |                |              |              |               |             |               |                    |                             | No Ramp Present      | NR                   | No ramp or sidewalk present                               |                              |
| 1191 | Lawrence     | Oaklandon Road     | Fox Road           | SE                  | N/W            |                |              |              |               |             |               |                    |                             | No Ramp Present      | NR                   | No ramp or sidewalk present                               |                              |
| 1192 | Lawrence     | Oaklandon Road     | Fox Road           | SW                  | N/E            |                |              |              |               |             |               |                    |                             | No Ramp Present      | NR                   | No ramp or sidewalk present                               |                              |
| 1193 | Indianapolis | Carroll Road       | 46th Street        | SW                  | N/E            |                |              |              |               |             |               |                    |                             | No Ramp Present      | NR                   | No sidewalk or ramp is present                            |                              |
| 1194 | McCordsville | Carroll Road       | 46th Street        | SE                  | N/W            |                |              |              |               |             |               |                    |                             | No Ramp Present      | NR                   | No ramp or sidewalk is present                            |                              |
| 1195 | McCordsville | Carroll Road       | 46th Street        | NE                  | S/W            |                |              |              |               |             |               |                    |                             | No Ramp Present      | NR                   | No ramp or sidewalk is present                            |                              |
| 1196 | Lawrence     | Carroll Road       | 46th Street        | NW                  | S/E            |                |              |              |               |             |               |                    |                             | No Ramp Present      | NR                   | No ramp or sidewalk is present                            |                              |
| 1197 | Lawrence     | 65th Street        | Carroll Road       | NW                  | S/E            |                |              |              |               |             |               |                    |                             | No ramp present      | NR                   | No ramp or sidewalk is present                            |                              |
| 1198 | McCordsville | 65th Street        | Carroll Road       | NE                  | S/W            |                |              |              |               |             |               |                    |                             | No ramp present      | NR                   | No sidewalk or ramp is present at the intersection        |                              |
| 1199 | McCordsville | 65th Street        | Carroll Road       | SE                  | N/W            |                |              |              |               |             |               |                    |                             | No ramp present      | NR                   | No sidewalk or ramp is present at the intersection        |                              |
| 1200 | Lawrence     | 65th Street        | Carroll Road       | SW                  | N/E            |                |              |              |               |             |               |                    |                             | No ramp present      | NR                   | No sidewalk or ramp is present at the intersection        |                              |

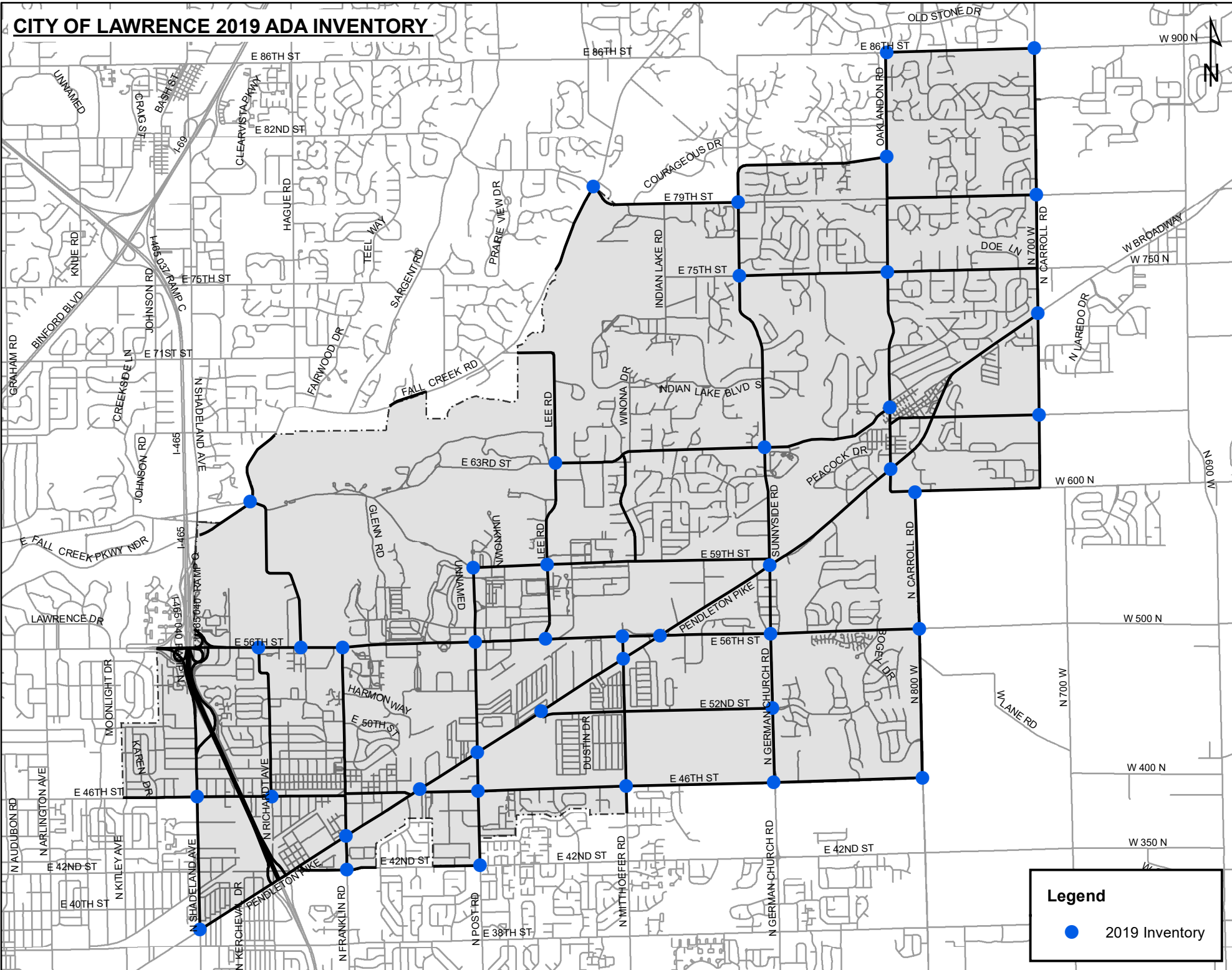


City of Lawrence Curb Ramp Inventory 2019

| ID   | Municipality | Cross Road 1    | Cross Road 2   | Directional         |                | S = Sufficient |              |              |               |             |               |                    | D = Deficient               |                     | N/A = Not Applicable |  | Comments |
|------|--------------|-----------------|----------------|---------------------|----------------|----------------|--------------|--------------|---------------|-------------|---------------|--------------------|-----------------------------|---------------------|----------------------|--|----------|
|      |              |                 |                | Intersection Corner | Ramp Direction | Width          | Wing 1 Slope | Wing 2 Slope | Running Slope | Cross Slope | Level Landing | Curb Ramp Material | Detectable Warning Material | Curb Ramp Type      | Overall Rating       |  |          |
| 1201 | Lawrence     | Verdin Street   | Oaklondon Road | SW                  | N/E            | S              | N/A          | N/A          | S             | S           | S             | Concrete           | None                        | One Way Directional | D                    |  |          |
| 1202 | Lawrence     | Verdin Street   | Oaklondon Road | SE                  | N/W            |                |              |              |               |             |               |                    |                             | No Ramp Present     | NR                   | No sidewalk or ramp is present at the intersection               |          |
| 1203 | Lawrence     | Verdin Street   | Oaklondon Road | NE                  | S/W            |                |              |              |               |             |               |                    |                             | No Ramp Present     | NR                   | No sidewalk or ramp is present at the intersection               |          |
| 1204 | Lawrence     | Verdin Street   | Oaklondon Road | NW                  | S/E            |                |              |              |               |             |               |                    |                             | No Ramp Present     | NR                   | No sidewalk or ramp is present at the intersection               |          |
| 1205 | Lawrence     | Richardt Avenue | 46th Street    | NW                  | E              | S              | S            | N/A          | S             | S           | S             | Concrete           | Brick                       | Perpendicular       | S                    | Evidence of ponding, curb overrun, and rutting.                  |          |
| 1206 | Lawrence     | 56th Street     | Lee Road       | SE                  | N              |                |              |              |               |             |               | Concrete           |                             | No Ramp Present     | NR                   | Sidewalk is present. No ramp or crossing of 56th Street Present. |          |
| 1207 | Lawrence     | Pendleton Pike  | 56th Street    | S                   | NE             |                |              |              |               |             |               |                    |                             | No Ramp Present     | NR                   | No sidewalk or ramp is present at the intersection               |          |
| 1208 | Lawrence     | Pendleton Pike  | 56th Street    | W                   | E              |                |              |              |               |             |               |                    |                             | No Ramp Present     | NR                   | No sidewalk or ramp is present at the intersection               |          |
| 1209 | Lawrence     | 56th Street     | Sunnyside Road | NW                  | E/S            |                |              |              |               |             |               |                    |                             | No Ramp Present     | NR                   | No sidewalk or ramp is present at the intersection               |          |
| 1210 | Lawrence     | 56th Street     | Sunnyside Road | SW                  | N/E            |                |              |              |               |             |               |                    |                             | No Ramp Present     | NR                   | No sidewalk or ramp is present at the intersection               |          |
| 1211 | Lawrence     | 56th Street     | Sunnyside Road | SE                  | N/W            |                |              |              |               |             |               |                    |                             | No Ramp Present     | NR                   | No sidewalk or ramp is present at the intersection               |          |
| 1212 | Lawrence     | 79th Street     | Sunnyside Road | NE                  | S/W            |                |              |              |               |             |               |                    |                             | No Ramp Present     | NR                   | No sidewalk or ramp is present at the intersection               |          |
| 1213 | Lawrence     | 79th Street     | Sunnyside Road | NW                  | S/E            |                |              |              |               |             |               |                    |                             | No Ramp Present     | NR                   | No sidewalk or ramp is present at the intersection               |          |
| 1214 | Lawrence     | 79th Street     | Sunnyside Road | SW                  | N/E            |                |              |              |               |             |               |                    |                             | No Ramp Present     | NR                   | No sidewalk or ramp is present at the intersection               |          |



# CITY OF LAWRENCE 2019 ADA INVENTORY

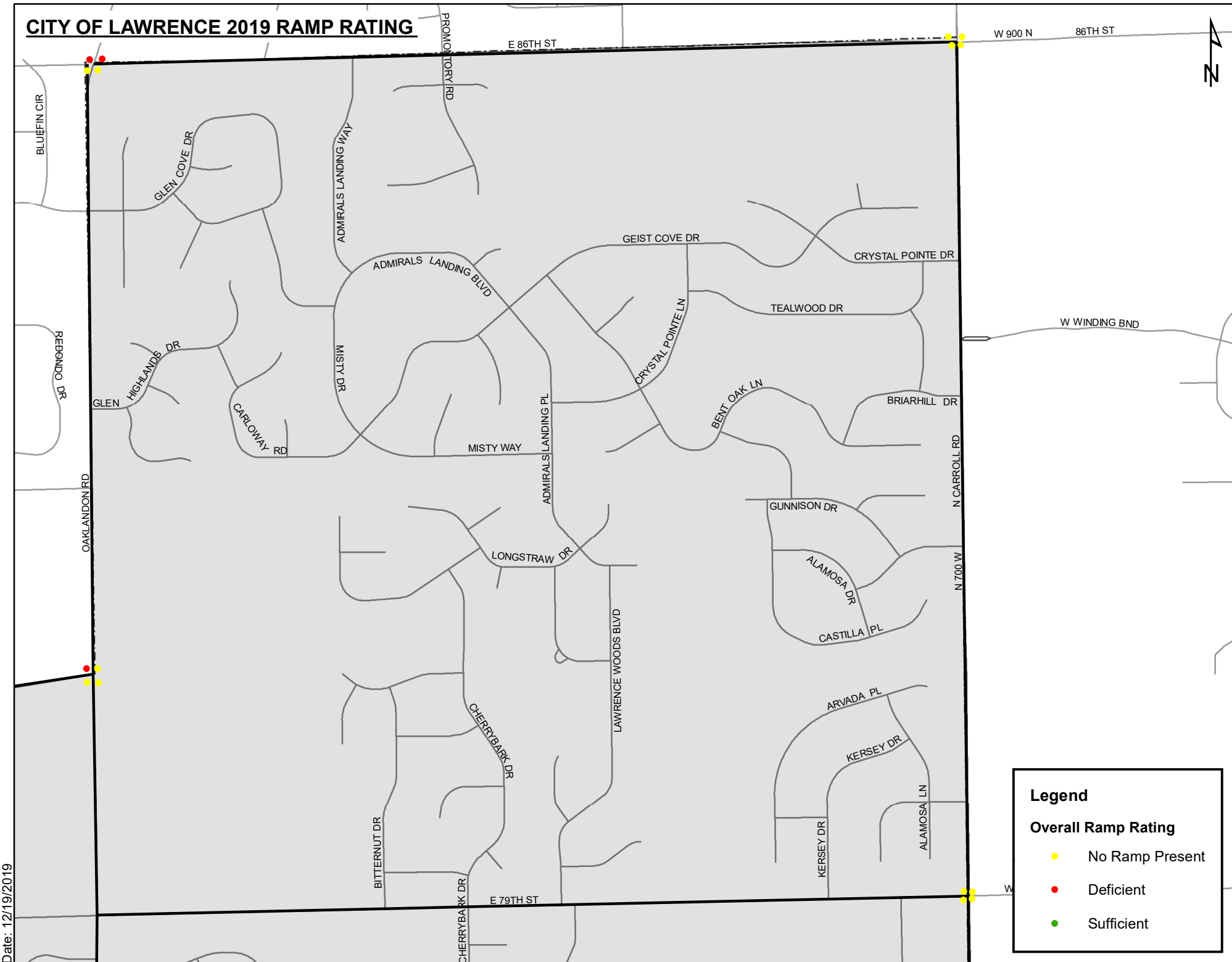


Date: 10/22/2019

**Legend**

- 2019 Inventory

# CITY OF LAWRENCE 2019 RAMP RATING



Date: 12/19/2019

# CITY OF LAWRENCE 2019 RAMP RATING

W 750 N



E 75TH ST

OAKLANDON RD

PEBBLEBROOKE EDR

PEBBLEBROOKE WDR

COBBLESTONE WDR

COBBLESTONE EDR

COBBLESTONE SDR

RED ROCK RD

RED ROCK RD

QUARTZ ROCK RD

IRON ROCK RD

FELD SPAR RD

SLIPPERY ROCK RD

LAUREL OAK DR

SEVEN OAKS DR N

SEVEN OAKS DR E

SYCAMORE DR

CABLE DR

RILEY RD

ORCHARD DR N

SYCAMORE DR

E 71ST ST

CABLE DR

OLD ORCHARD DR

HAWKS HILL RD

MCCORD LN

PENDLETON PIKE

ELIAS CIR

ROAN LN

N 700 W N CARROLL RD

W DENTON DR

OAKLANDON RD

MEADOW LN

TROLLEY RD

RUSTIC CT

BITTERSWEET LN

W ODESSA WAY

BRANDON ST

SPARROWOOD DR

SPARROWOOD BLVD

E 65TH ST

W BROADWAY

PENDLETON PIKE

N DENTON DR

N LAREDO DR

## Legend

### Overall Ramp Rating

- No Ramp Present
- Deficient
- Sufficient

Date: 10/22/2019

VERDIN ST

BROADWAY ST

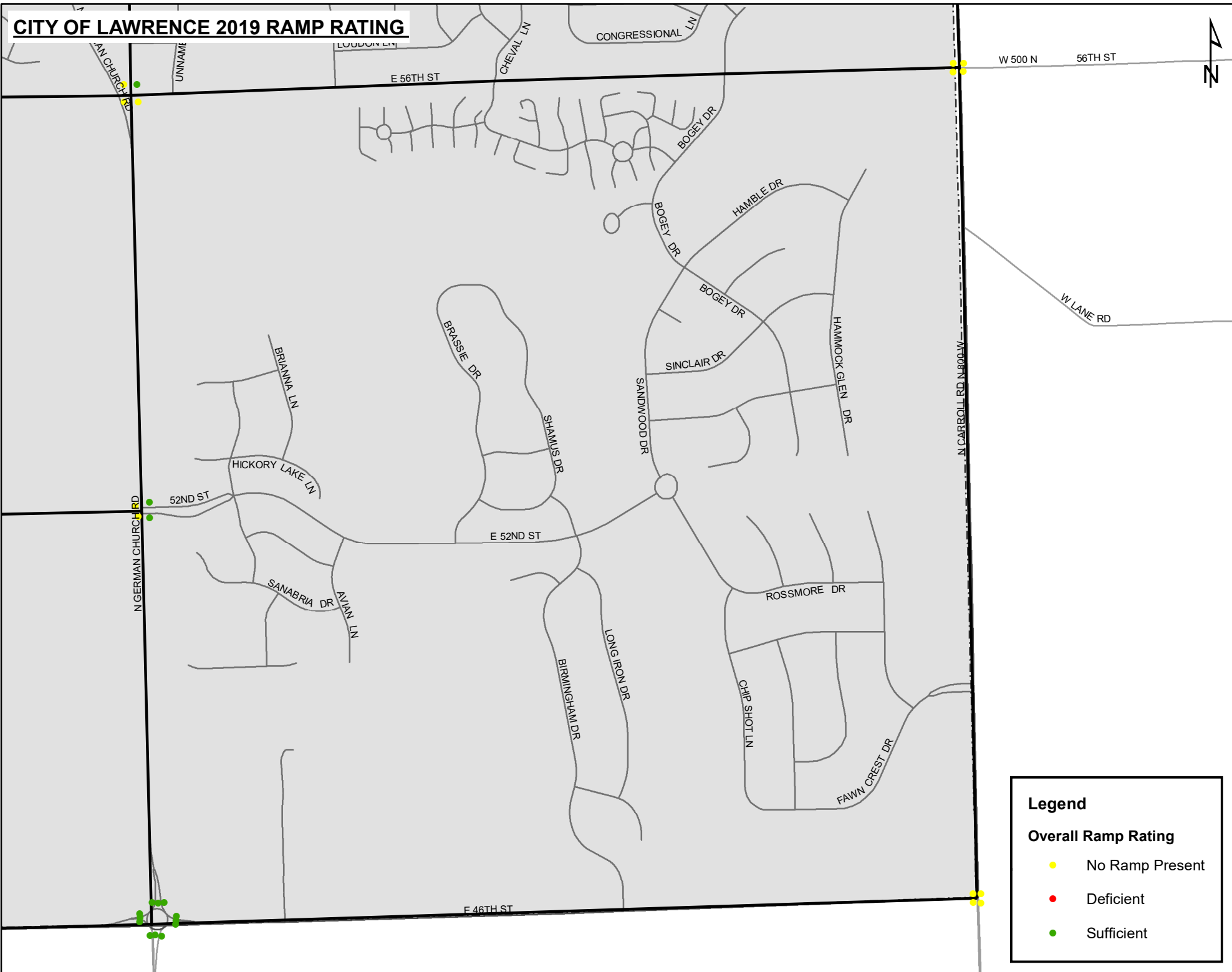
RAILROAD ST

BROADWAY ST

PARADISE CT

W 6

# CITY OF LAWRENCE 2019 RAMP RATING



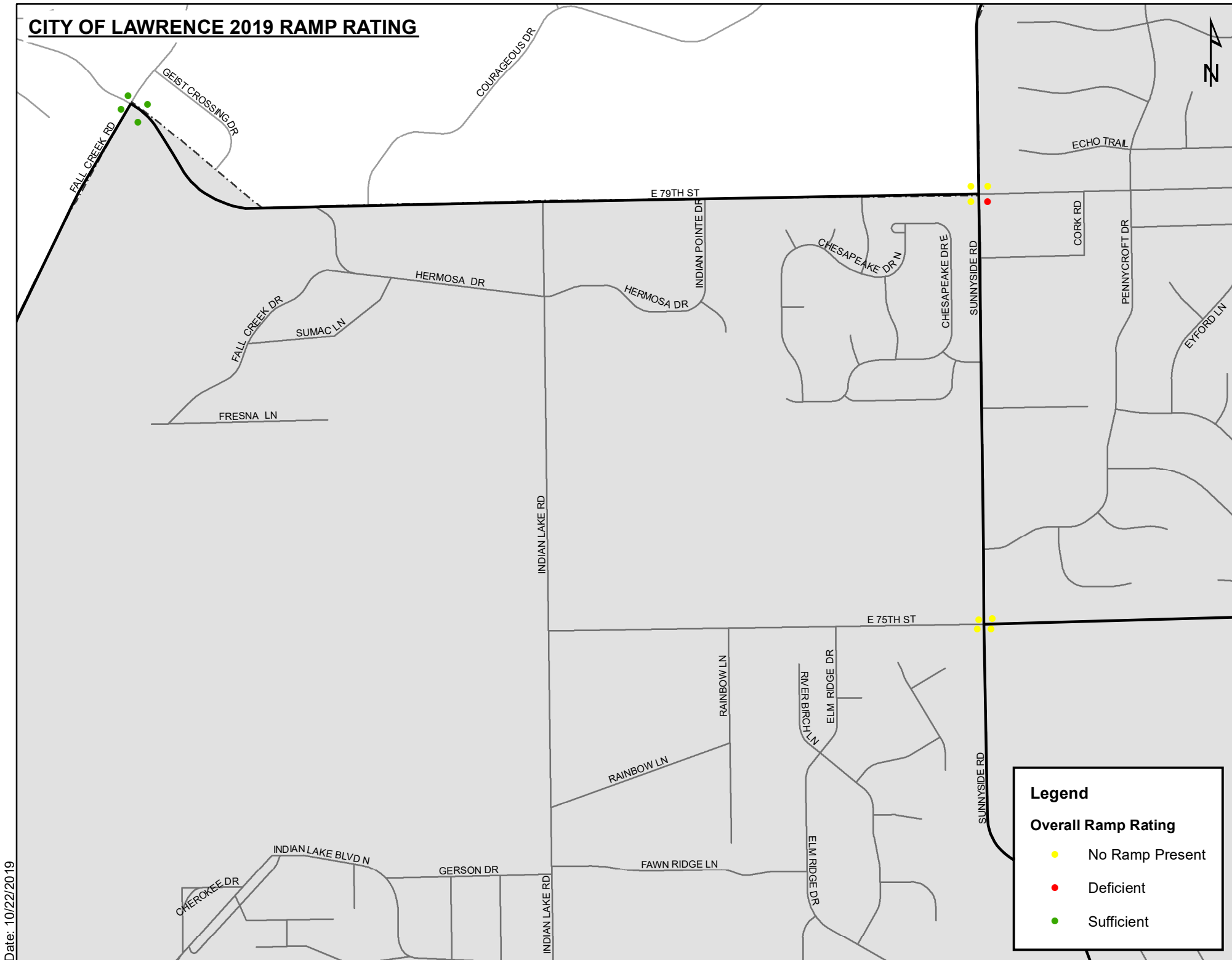
**Legend**

**Overall Ramp Rating**

- No Ramp Present
- Deficient
- Sufficient

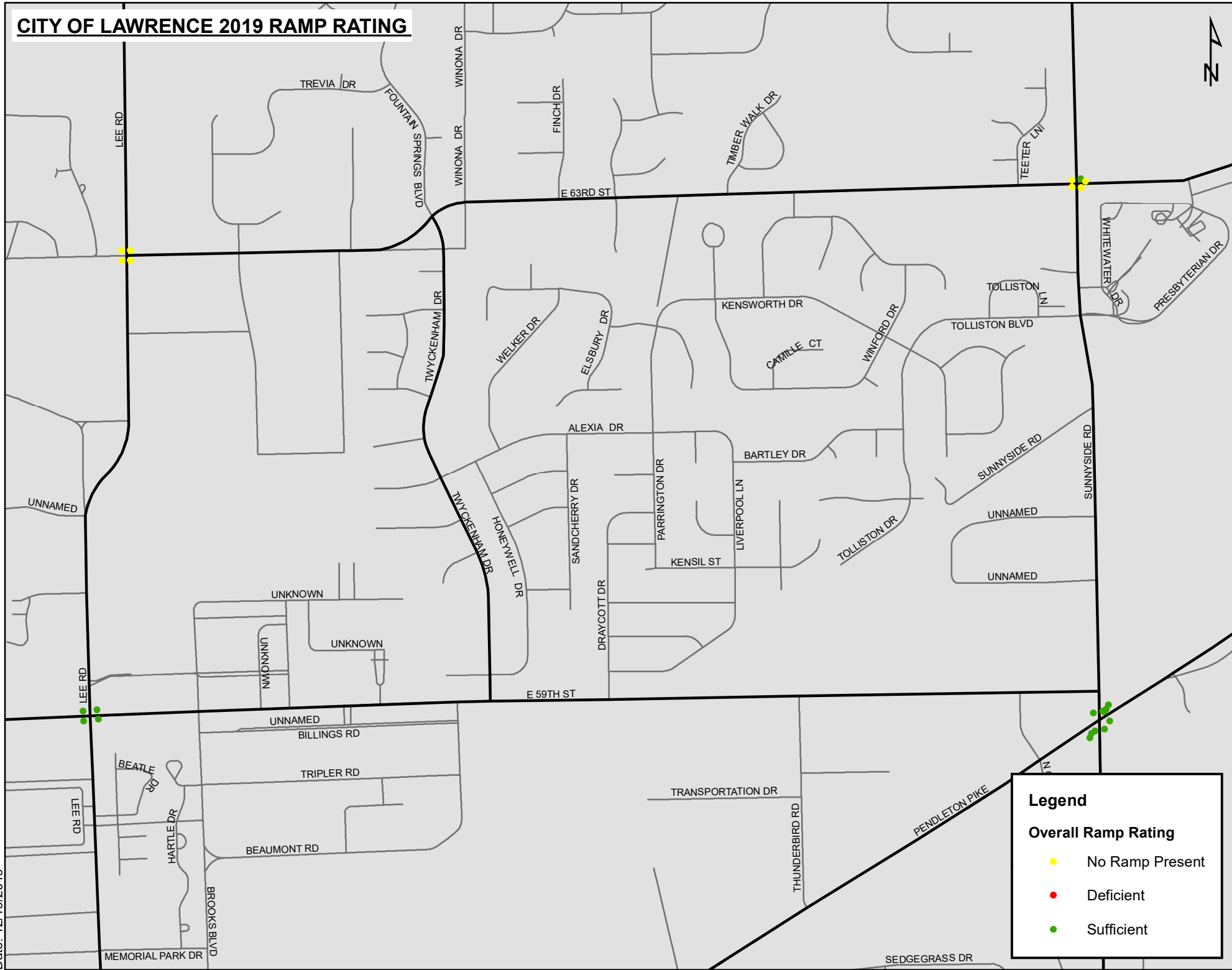
Date: 12/19/2019

# CITY OF LAWRENCE 2019 RAMP RATING



Date: 10/22/2019

# CITY OF LAWRENCE 2019 RAMP RATING



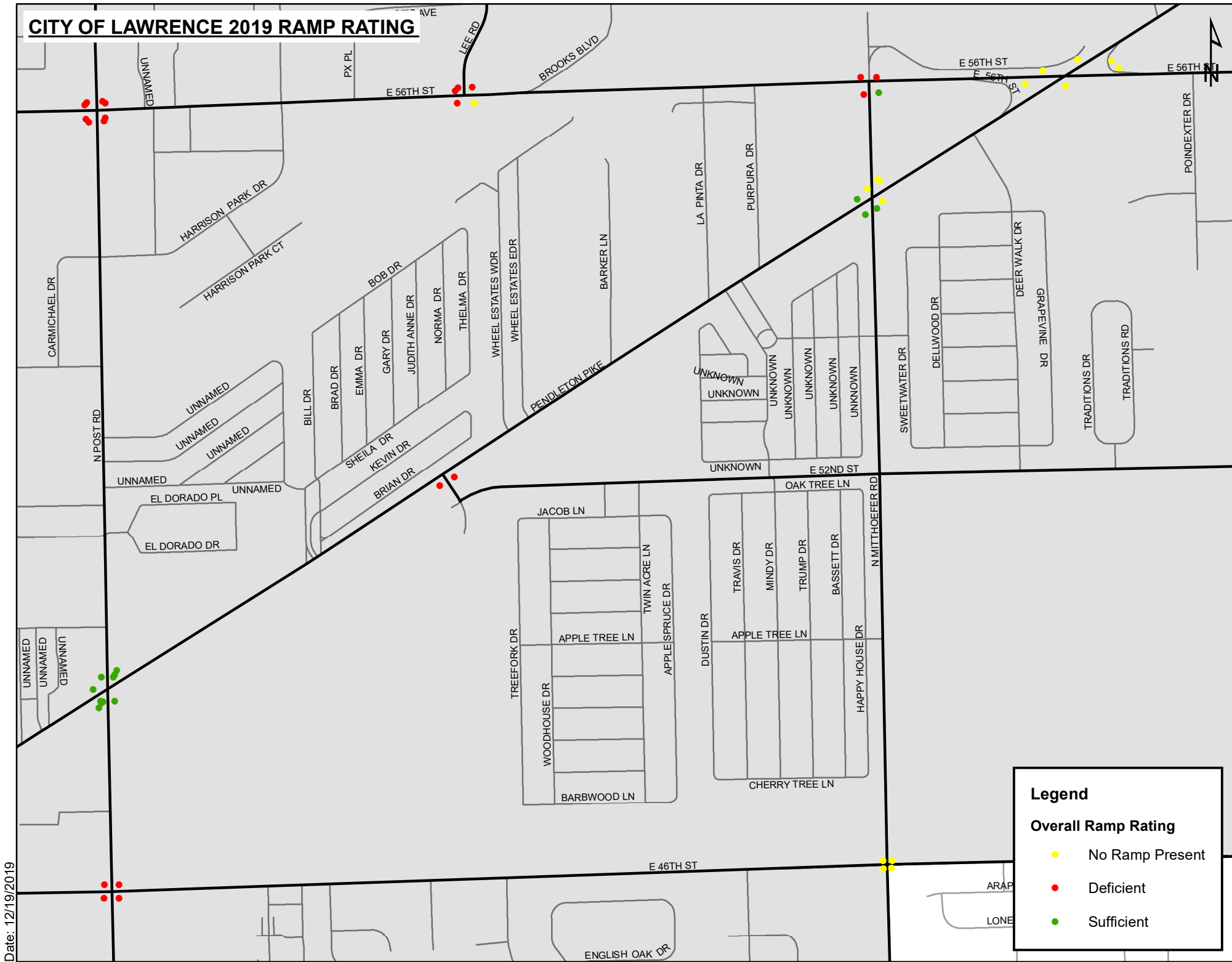
**Legend**

**Overall Ramp Rating**

- No Ramp Present
- Deficient
- Sufficient

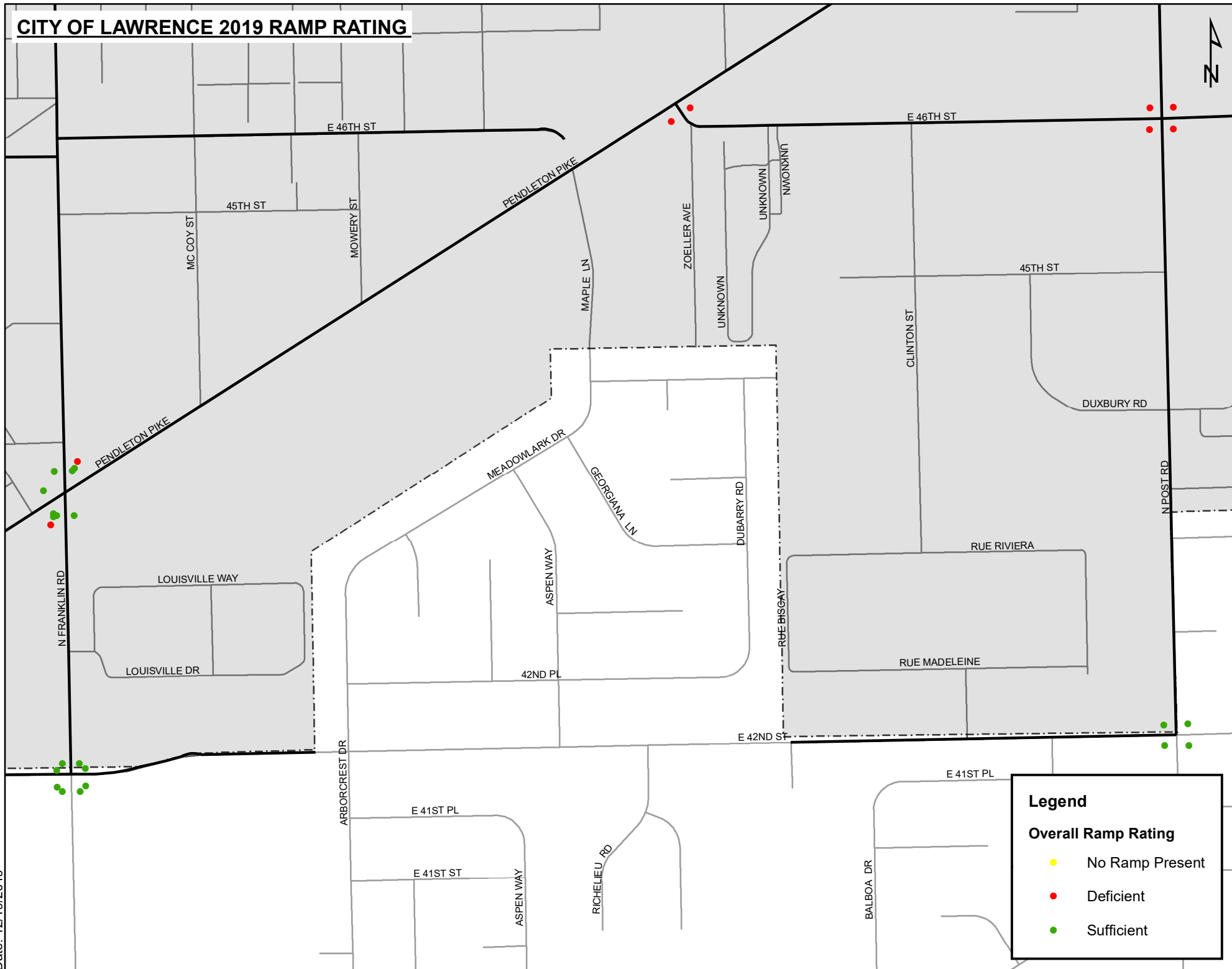


# CITY OF LAWRENCE 2019 RAMP RATING



Date: 12/19/2019

# CITY OF LAWRENCE 2019 RAMP RATING



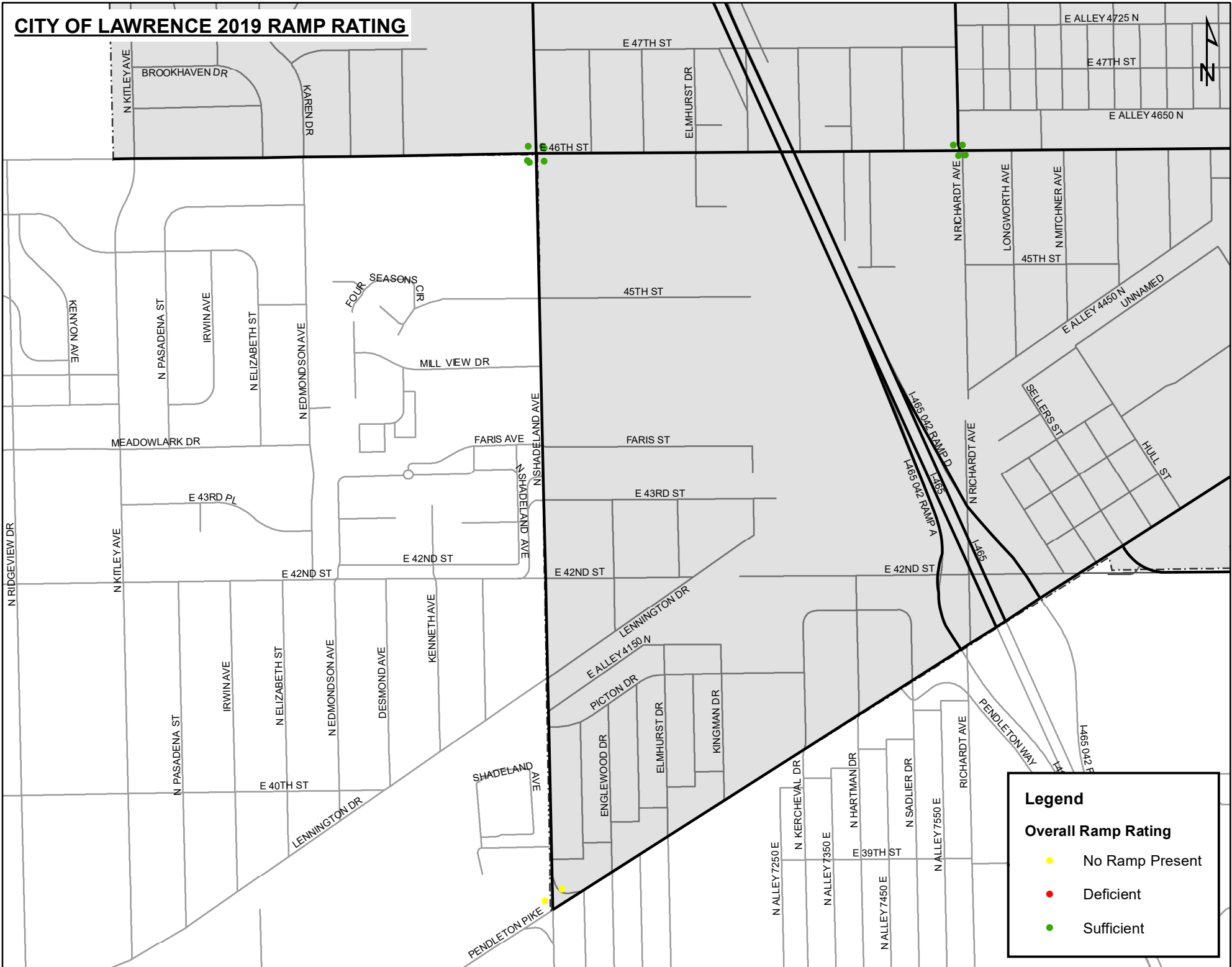
**Legend**

**Overall Ramp Rating**

- No Ramp Present
- Deficient
- Sufficient

Date: 12/19/2019

# CITY OF LAWRENCE 2019 RAMP RATING



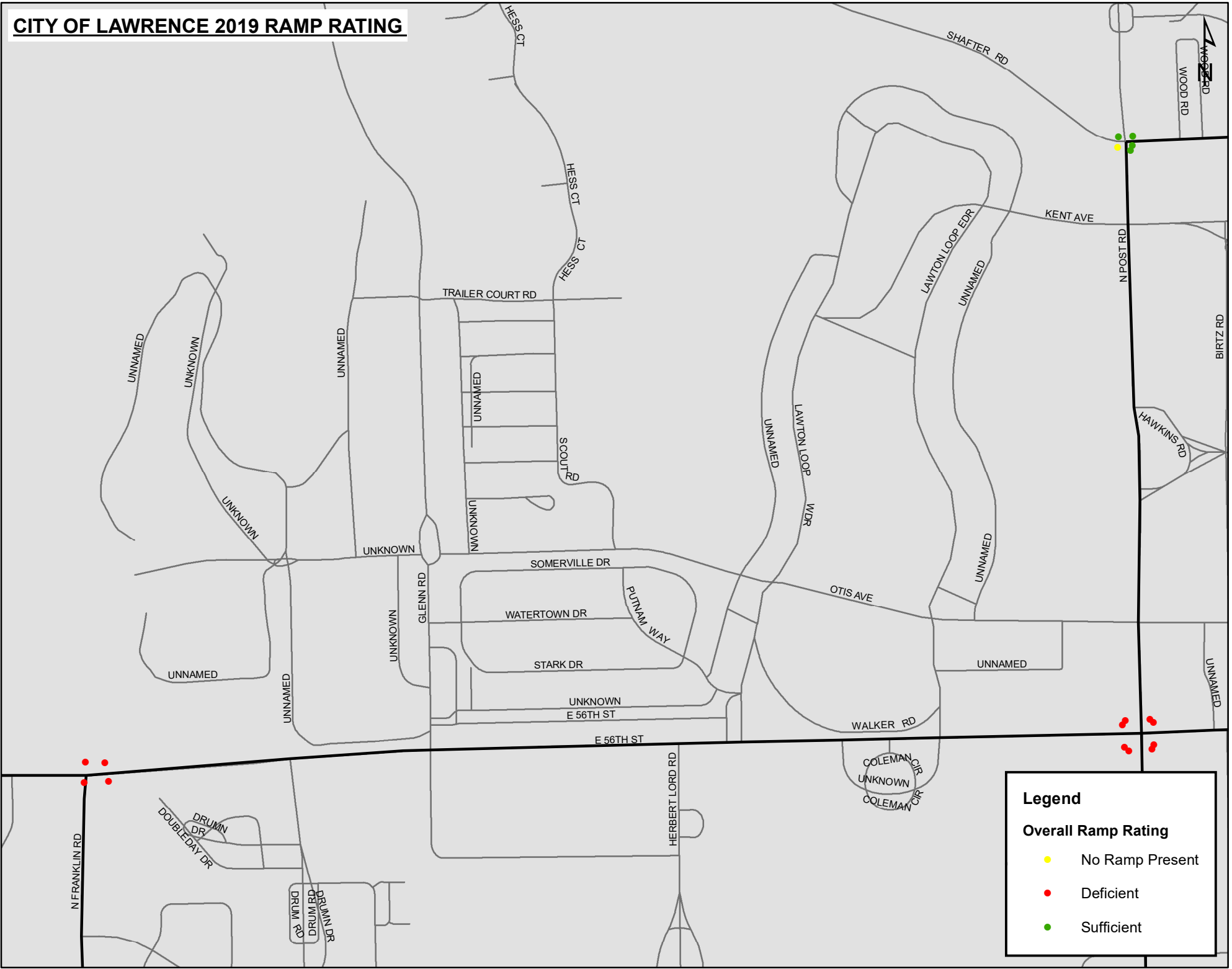
**Legend**

**Overall Ramp Rating**

- No Ramp Present
- Deficient
- Sufficient

# CITY OF LAWRENCE 2019 RAMP RATING

Date: 12/19/2019



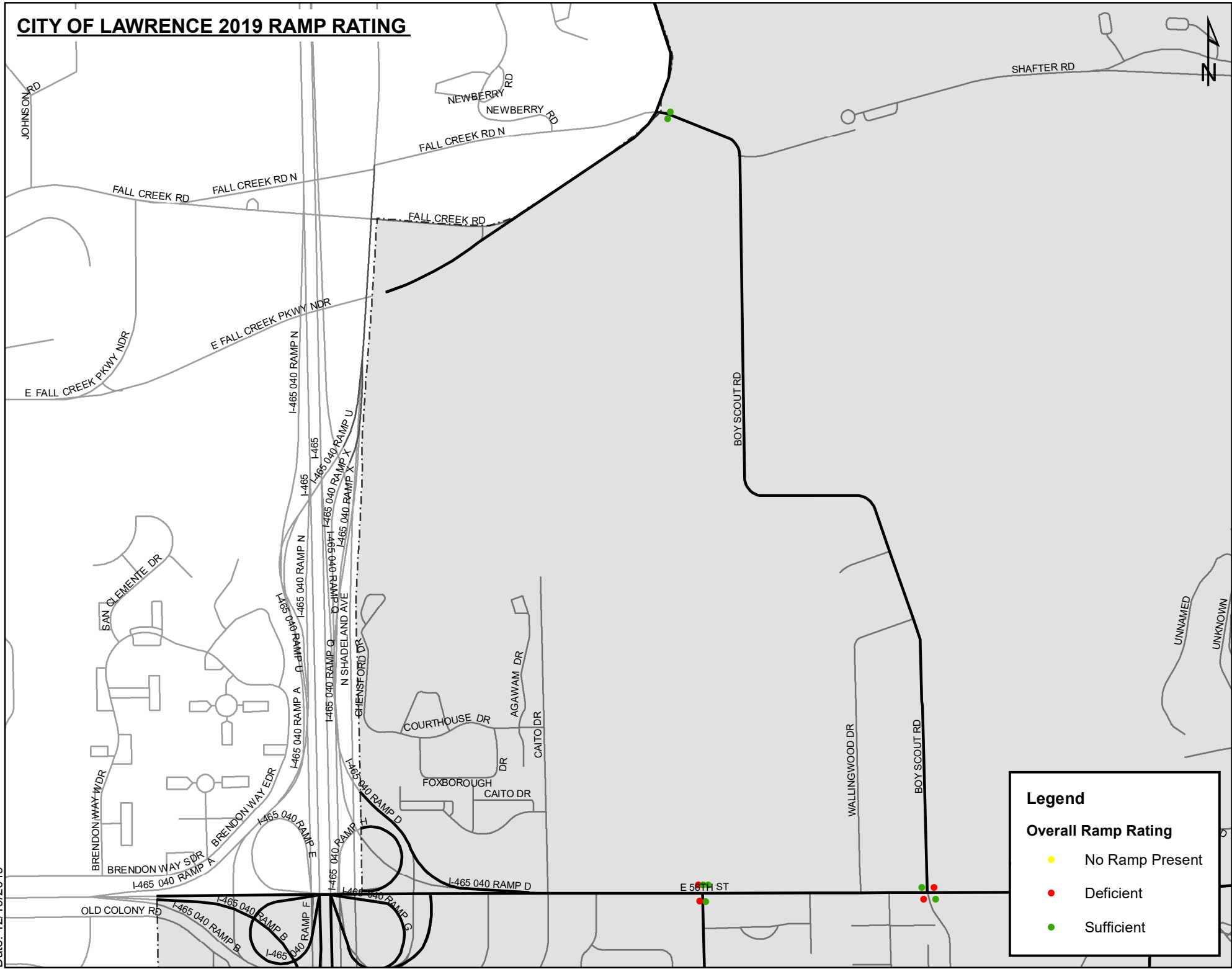
**Legend**

**Overall Ramp Rating**

- No Ramp Present
- Deficient
- Sufficient

# CITY OF LAWRENCE 2019 RAMP RATING

Date: 12/19/2019

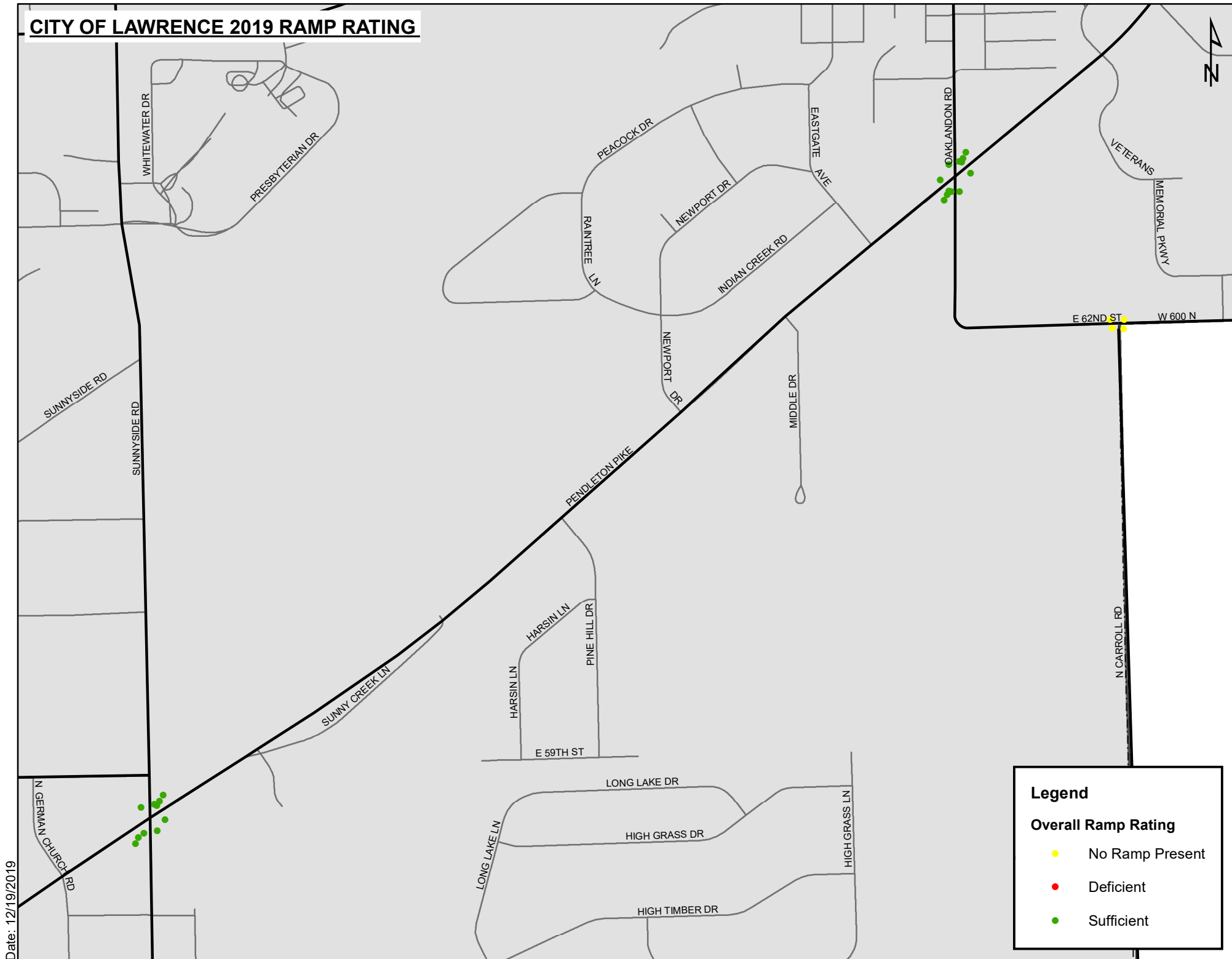


**Legend**

**Overall Ramp Rating**

- No Ramp Present
- Deficient
- Sufficient

# CITY OF LAWRENCE 2019 RAMP RATING



Date: 12/19/2019