

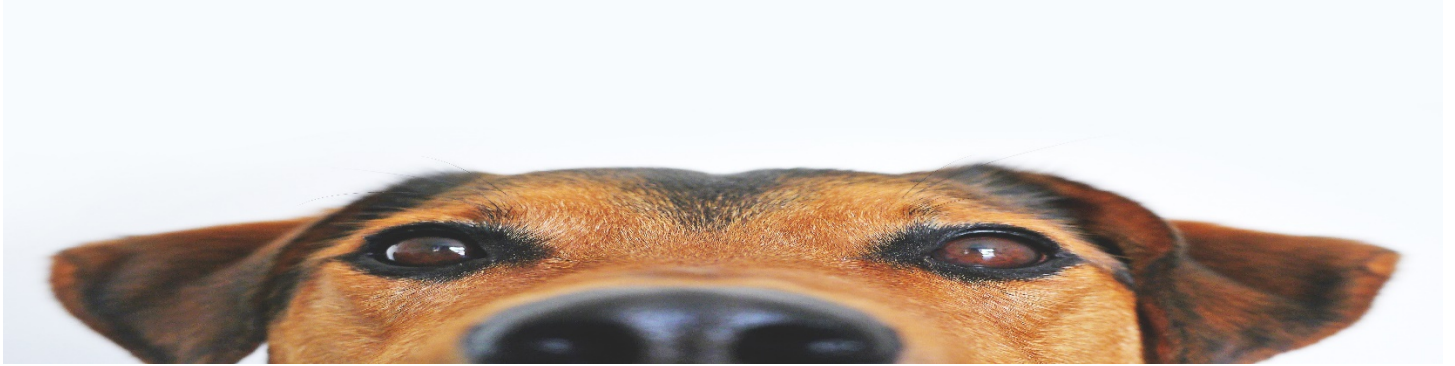
## ***CLEAR CHOICES CLEAN WATER***

### ***PET POO***

**Why do parks and trails stress picking up your dogs' poo?** Because they are trying to protect you, our waterways and the other wildlife that resides in and around our water! Fecal coliform bacteria are organisms that are common to the intestines of humans and animals, so people who come in contact with pet poo are at risk of disease, viruses, and parasites. To protect yourself and others, pick up your dogs' poo next time you take that afternoon stroll. Use this link to take an action pledge and challenge your friends and family to do the same:

<https://indiana.clearchoicescleanwater.org/pledges/pet-poo/>

#water #petpoo #bacteria #pollution



**We've been asking you to pick up your pet's poo, but what happens if you don't?** Every time it rains, some of the poo left lying around is washed out of the yard, down a storm drain, and into the waterways we play in, get drinking water from, and more. If you remember from last week, this is a problem because poo contains bacteria, and coming into contact with it can result in harmful diseases and viruses. Remember to pick up your pets' poo and help protect our water!

#water #petpoo #bacteria #pollution

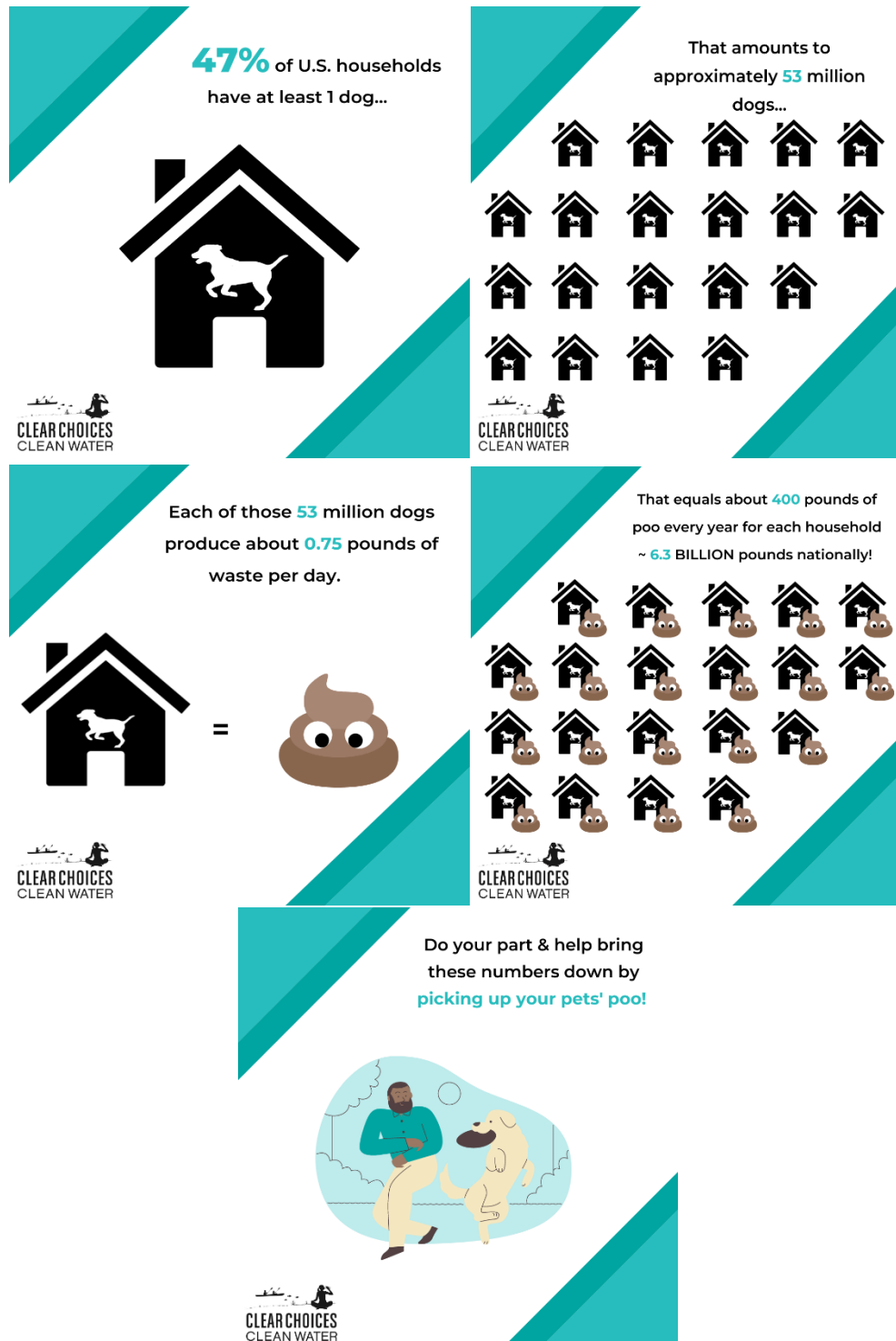


**If you're a numbers person, this might help you better visualize why we need to pick up pets' poo:**

- 1) An estimated 47% of U.S. households have at least 1 dog;
- 2) That amounts to approximately 53 million dogs;
- 3) Each of those 53 million dogs produce about .75lbs of waste per day;
- 4) That equates to about 400lbs of poo every year for each household ~ about 6.3 BILLION pounds nationally.

That would fill up a football field about 800 feet high! Help bring those numbers down, and pick up your pets' poo.

#water #petpoo #bacteria #pollution





**Want to know how to dispose of your pets' poo?**

- 1) Bag it and throw it in the trash. Consider using biodegradable bags. Biodegradable bags can be thrown in the trash but can also be composted. Be sure not to use compost containing dog waste on vegetable gardens or food crops;
- 2) Flush it down the toilet. A warning, though: if your home is on a septic system, talk with the manufacturer to make sure your system can handle the extra load;
- 3) Install an underground pet waste digester.

These affordable, easy-to-install tools enable you to dispose of the pet waste without ever having to bring it inside your home.

