

AUG 2017

Scott Salsbery, Superintendent
ssalsbery@cityoflawrence.org
(317) 524-6305



THE LAWRENCE LIFT NEWSLETTER

ISSUE

18

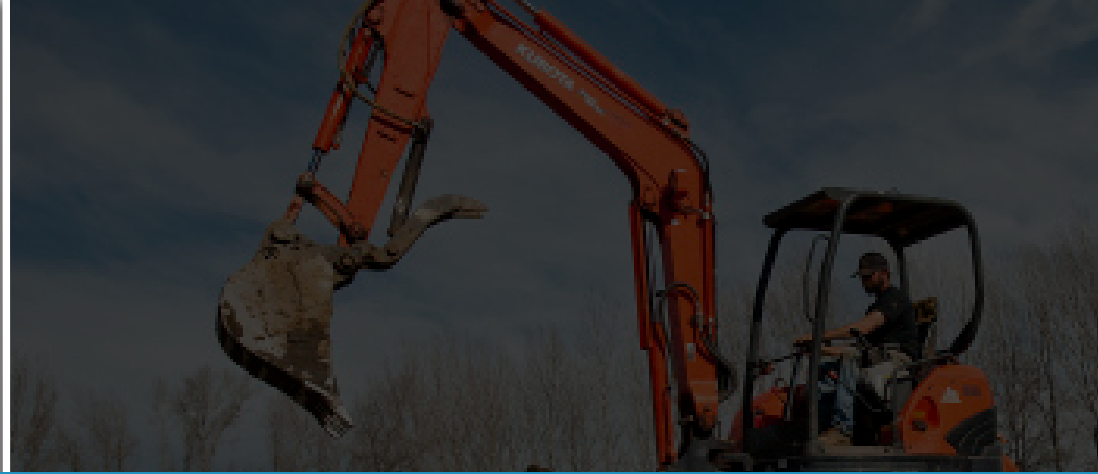
REPUBLIC SERVICES

Republic's customer service may be reached at 317-773-0002. Yard waste is not picked up during July, August and September, per the contract.

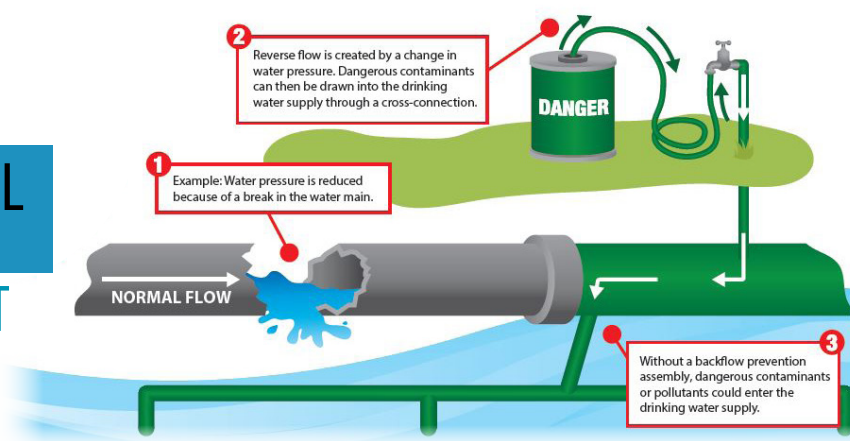
Overage tags may be purchased at the DPW office for \$2 each or you may request a second toter for your home (the cost is \$1.25 monthly for the second toter.) More information on trash pick-up is available @cityoflawrence.org.

LAWRENCE NORTH VS. LAWRENCE CENTRAL FOOTBALL

City officials will present a check to the Lawrence Township School Foundation at the Lawrence North - Lawrence Central football game September 1. The check will represent the funds raised from the second annual Just Wingin' It with Our First Responders to the Susan Jordan Legacy Fund. LN is the host this year of the annual gridiron battle at 7 p.m. at 7802 Hague Road.



CROSS CONNECTION CONTROL AKA "BACKFLOW PREVENTION" AND WHY IT IS IMPORTANT



In simple terms, backflow or back-siphonage is a situation where potentially contaminated water may be introduced into the public water supply and/or into the customer's internal plumbing. A yard sprayer for herbicides or pesticides attached to a garden hose is a good example of a potential source of contamination. Backflow can have serious and potentially fatal results (check out this site:

<http://www.abpa.org/?page=Incidents>). There are laws requiring public water suppliers to implement and monitor a Cross-Connection Control program (in Indiana typically referred to as "Rule 10" in the IDEM public water supply regulation 327 IAC 8-10).

Lawrence Resolution No. 1, 1996 forms the basis of Lawrence's requirements. If you are required to have a device, you must install the proper device.

If you have a device, it must be tested annually by a tester who is certified to test the devices by the State of Indiana and provide a copy of the test to Lawrence Utilities every year.

It may seem like a major hassle, but it is really all about protecting the public water supply. Lawrence Utilities has certified testers on staff and we can perform the test and place the charges (\$80 per test) directly on your monthly utility bill.



Protecting our groundwater supplies is also a huge responsibility and it would be a good idea to know if you are in a wellhead protection area (WHPA) and what kinds of activities are prohibited in the WHPA. There is a wealth of information concerning Wellhead Protection efforts overseen by the Marion County Wellfield Education Corporation (MCWEC) together with Mundell & Associates, a local engineering firm with a long history of partnership with MCWEC geared towards keeping our local water supplies

free of contamination.

You will find plenty of information on this site as to what you can do as a residential property owner, and also assistance with free and confidential assessments for businesses located in a WHP area. Small businesses may also be eligible for assistance with secondary containment supplies. Generally, the purpose of secondary containment is to prevent spills and leaks from the stored container from reaching the ground and protect the integrity of the container that is stored within in or on top of

the secondary containment device.

As I have mentioned before, the public water supply is exactly that; Public. It is in all our best interests to prevent chemicals and other objectionable materials from contaminating our water supply. The MCWEC website can be found at <http://indyh2o.org/about-mcwec/>.

Thank you,

Scott Salsbery, Superintendent
ssalsbery@cityoflawrence.org
(317)524-6305